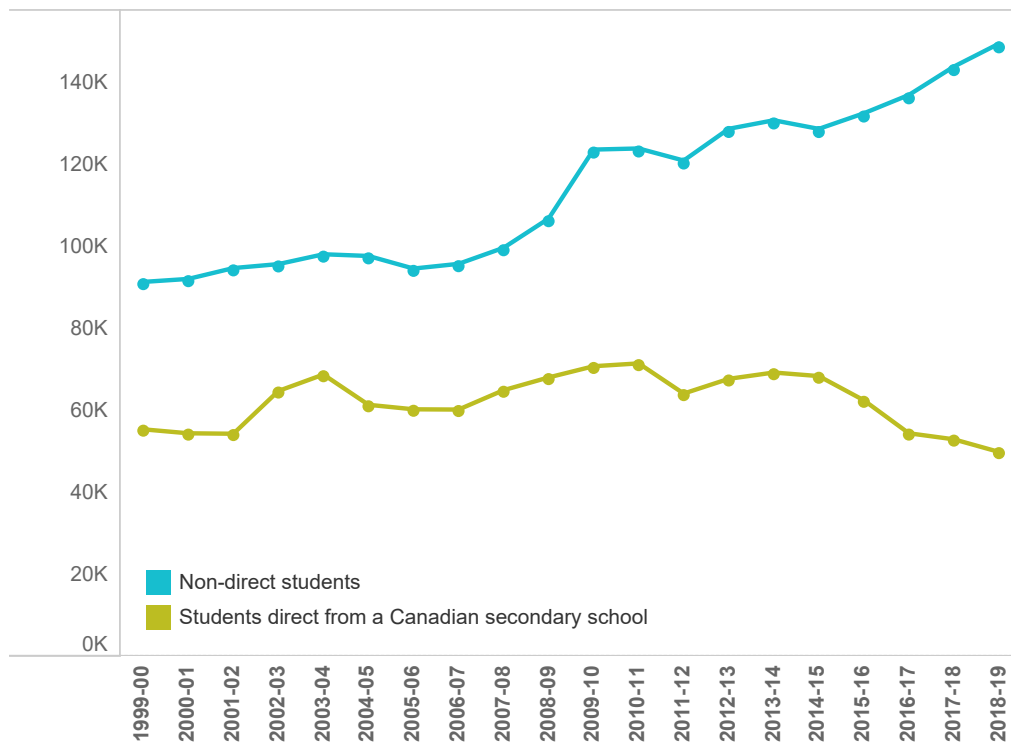


Number of Applicants to Ontario colleges

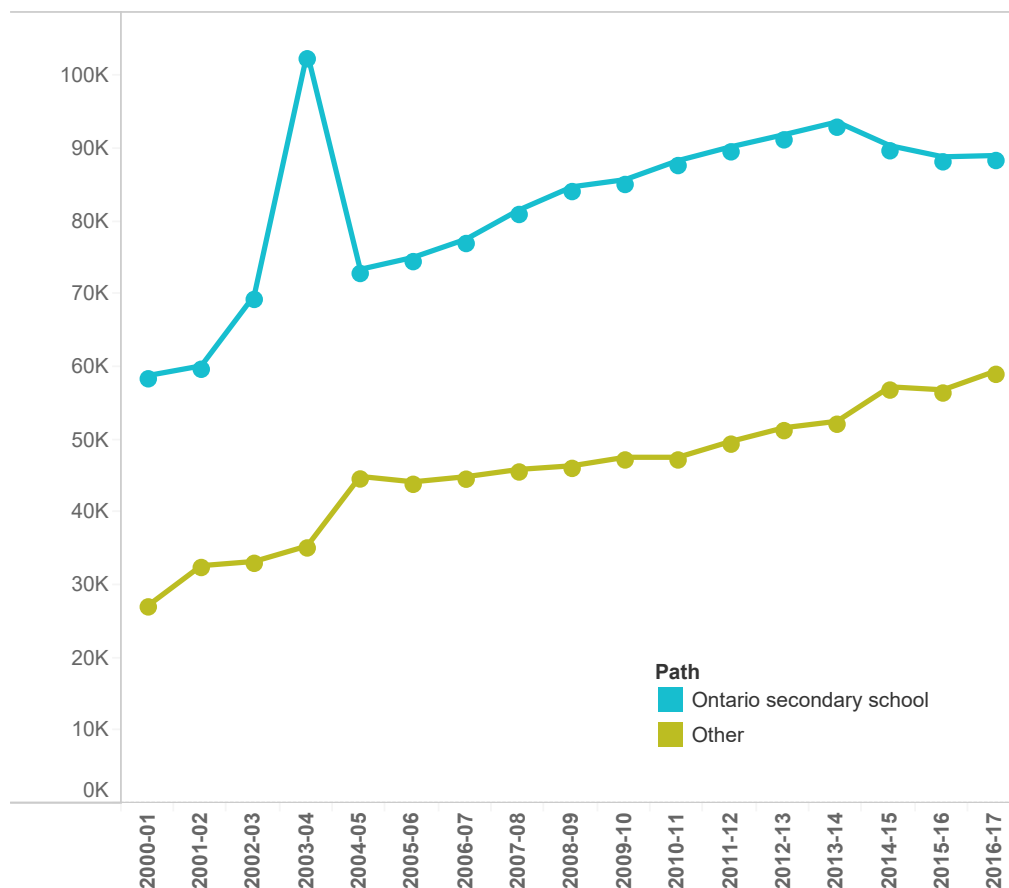


Year	Students direct from a Canadian secondary school	Non-direct students	Total
1999-00	55,409	91,342	146,751
2000-01	54,441	92,071	146,512
2001-02	54,332	94,715	149,047
2002-03	64,761	95,681	160,442
2003-04	68,762	98,082	166,844
2004-05	61,389	97,663	159,052
2005-06	60,289	94,596	154,885
2006-07	60,225	95,743	155,968
2007-08	64,952	99,652	164,604
2008-09	68,056	106,776	174,832
2009-10	70,790	123,597	194,387
2010-11	71,480	123,867	195,347
2011-12	64,128	120,921	185,049
2012-13	67,714	128,656	196,370
2013-14	69,256	130,742	199,998
2014-15	68,384	128,639	197,023
2015-16	62,488	132,440	194,928
2016-17	54,450	136,909	191,359
2017-18	52,971	143,827	196,798
2018-19	50,000	146,751	196,751

Source: Colleges Ontario; Ontario College Application Service

Direct applicants include those applying directly from a Canadian high school (includes school board-run adult day schools). Non-direct applicants include those not applying directly from a Canadian secondary school.

Number of Applicants to Ontario Universities



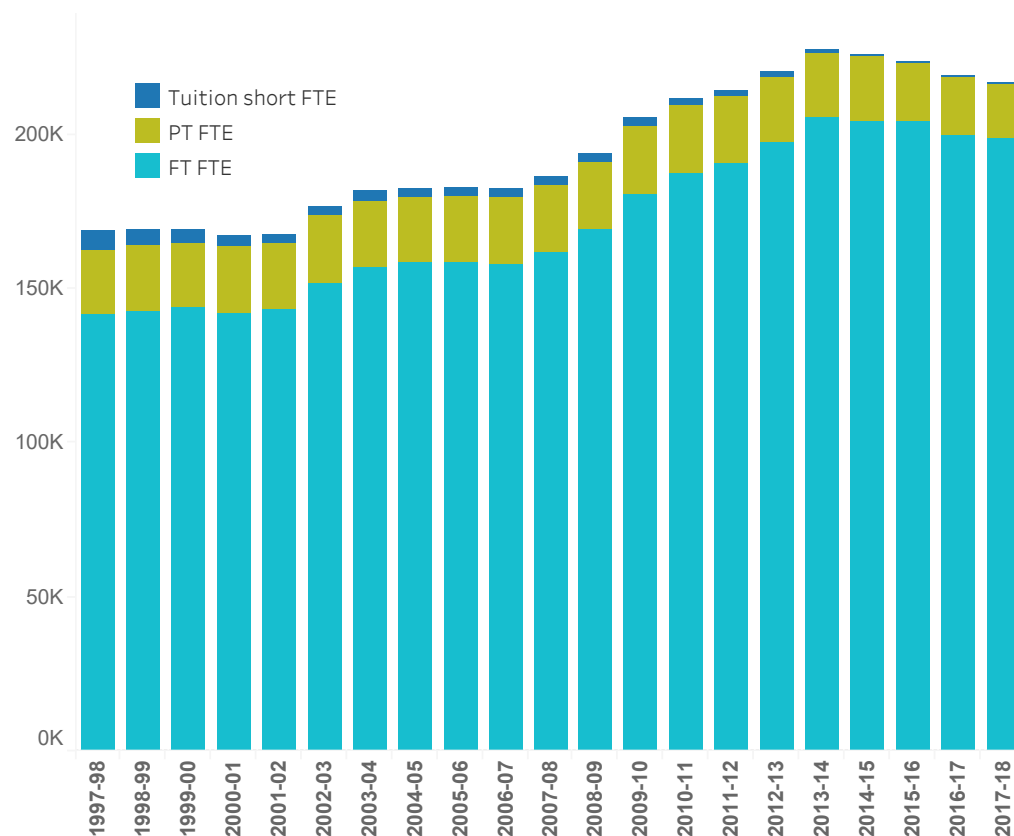
Year	Ontario secondary school	Other	Total
2000-01	58,844	27,242	86,086
2001-02	60,164	32,699	92,863
2002-03	69,841	33,278	103,119
2003-04	103,178	35,407	138,585
2004-05	73,434	44,965	118,399
2005-06	75,077	44,224	119,301
2006-07	77,585	44,934	122,519
2007-08	81,609	45,933	127,542
2008-09	84,783	46,431	131,214
2009-10	85,765	47,599	133,364
2010-11	88,385	47,598	135,983
2011-12	90,288	49,789	140,077
2012-13	91,949	51,661	143,610
2013-14	93,699	52,547	146,246
2014-15	90,434	57,281	147,715
2015-16	88,904	56,871	145,775
2016-17	89,085	59,461	148,546

Source: Ontario Universities' Application Centre Data

Ontario Secondary School applicants refer to applicants who attended full time and graduated from an Ontario secondary school the previous year. Other applicants include all other first year applicants.

Note: In 2003, the Ontario Academic Credit (a fifth year of secondary education) was phased out which led to a high proportion of students graduating from Ontario secondary schools. This is commonly referred to as the Double Cohort year.

Enrolment in Ontario Colleges

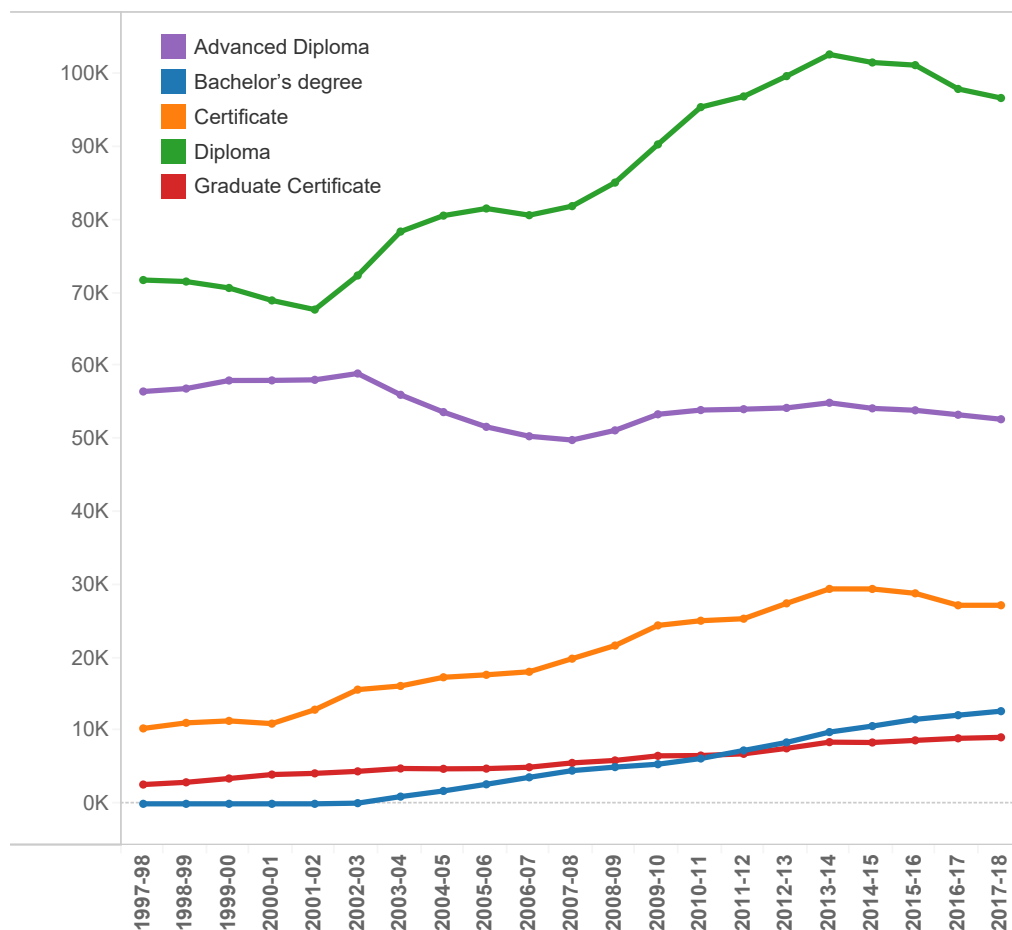


	FT Headcount	FT FTE	PT FTE	Tuition short FTE	Total FTE
1997-98	135,982	141,312	20,809	6,451	168,572
1998-99	136,444	142,577	21,305	5,462	169,344
1999-00	136,754	143,599	21,193	4,203	168,995
2000-01	134,842	142,068	21,540	3,304	166,912
2001-02	134,453	142,959	21,577	3,155	167,690
2002-03	142,177	151,625	21,988	2,868	176,481
2003-04	147,057	156,515	21,870	3,029	181,414
2004-05	149,336	158,251	21,181	2,981	182,414
2005-06	148,663	158,487	21,384	3,002	182,873
2006-07	148,576	157,831	21,448	2,975	182,254
2007-08	152,418	161,871	21,328	2,740	185,939
2008-09	158,420	169,046	21,720	2,654	193,420
2009-10	168,673	180,267	22,317	2,618	205,203
2010-11	174,820	187,430	21,700	2,687	211,817
2011-12	176,029	190,621	21,365	2,149	214,135
2012-13	182,077	197,387	20,842	2,140	220,369
2013-14	188,431	205,474	20,965	975	227,414
2014-15	186,821	204,370	20,965	397	225,732
2015-16	187,063	204,350	19,001	431	223,782
2016-17	182,989	199,689	18,636	395	218,720
2017-18	182,989	199,689	18,636	395	218,720

Source: Ontario Ministry of Training, Colleges and Universities

Tuition Short Programs are programs that are generally less than 52 weeks in duration. Full-time equivalent (FTE) is the total funded activity over the entire academic year. It excludes separately funded nursing enrolment since 2001-02. Full-time headcount includes the number of funded full-time students enrolled in November for each year.

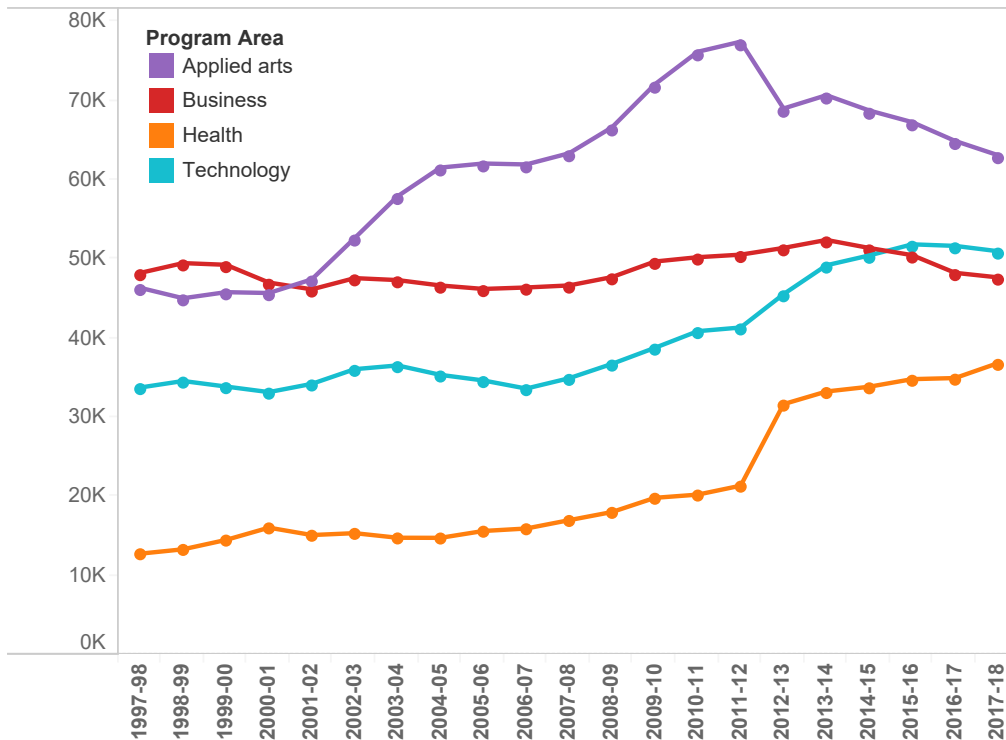
Enrolment in Ontario Colleges by Credential



	Total	Advanced ..	Bachelor's ..	Certificate	Diploma	Graduate C..
1997-98	141,312	56,526	0	10,335	71,808	2,643
1998-99	142,577	56,929	0	11,098	71,601	2,950
1999-00	143,599	58,036	0	11,371	70,720	3,472
2000-01	142,068	58,048	0	10,995	69,012	4,012
2001-02	142,959	58,125	0	12,904	67,754	4,175
2002-03	151,625	58,994	92	15,656	72,432	4,452
2003-04	156,515	56,073	988	16,157	78,452	4,844
2004-05	158,251	53,702	1,765	17,348	80,640	4,797
2005-06	158,487	51,680	2,676	17,687	81,616	4,827
2006-07	157,838	50,390	3,633	18,102	80,697	5,015
2007-08	161,871	49,874	4,550	19,899	81,938	5,610
2008-09	169,046	51,199	5,035	21,698	85,167	5,947
2009-10	180,267	53,401	5,430	24,458	90,401	6,578
2010-11	187,430	53,981	6,213	25,102	95,513	6,620
2011-12	190,621	54,102	7,314	25,377	96,976	6,853
2012-13	197,542	54,277	8,417	27,482	99,761	7,605
2013-14	205,474	54,981	9,835	29,464	102,738	8,456
2014-15	204,369	54,216	10,657	29,457	101,632	8,407
2015-16	204,350	53,948	11,579	28,857	101,268	8,698
2016-17	199,689	53,338	12,150	27,218	98,005	8,978
2017-18	198,522	52,722	12,702	27,222	96,763	9,113

Source: Ontario Ministry of Training, Colleges and Universities. Enrolments are shown on a full time equivalent basis.

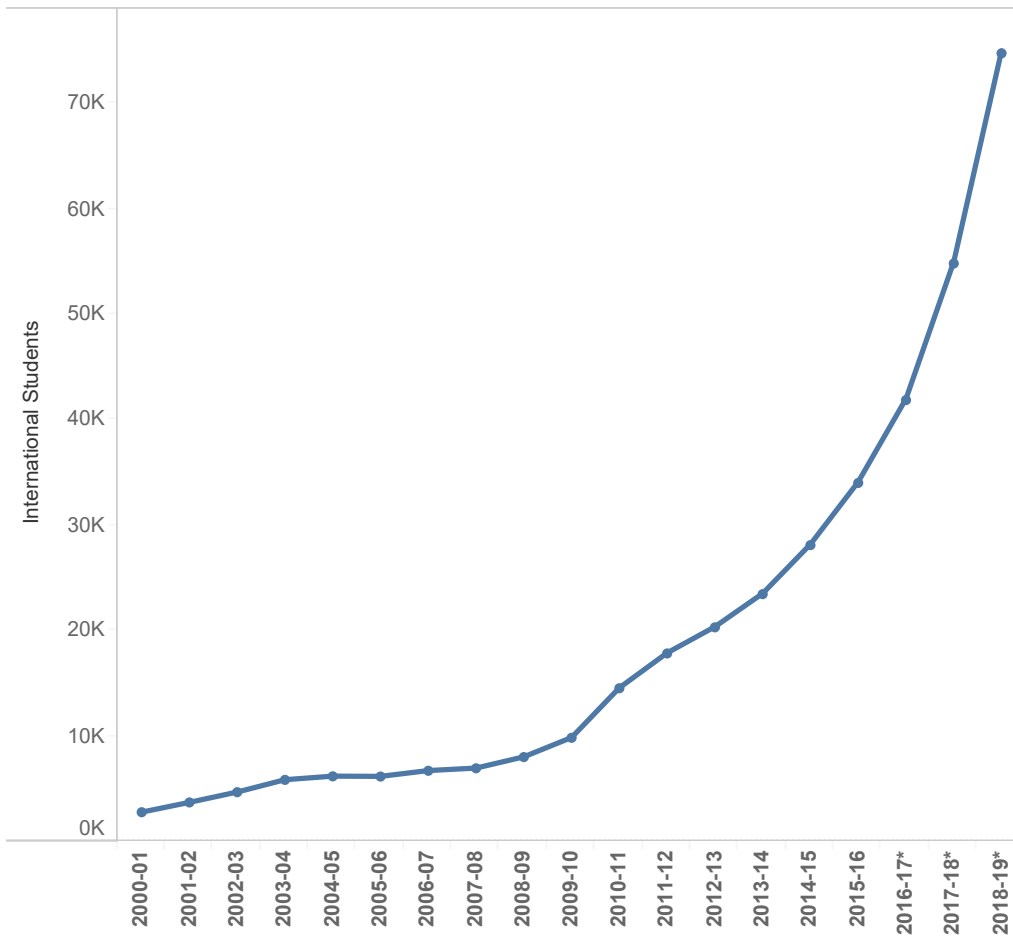
Enrolment in Ontario Colleges by Program Area



	Applied arts	Business	Health	Technology
1997-98	46,334	48,221	12,756	33,743
1998-99	45,020	49,458	13,307	34,566
1999-00	45,787	49,244	14,490	33,864
2000-01	45,681	47,002	16,041	33,162
2001-02	47,406	46,140	15,107	34,203
2002-03	52,618	47,561	15,345	36,060
2003-04	57,898	47,314	14,766	36,532
2004-05	61,525	46,631	14,755	35,341
2005-06	62,039	46,194	15,620	34,634
2006-07	61,919	46,378	15,932	33,610
2007-08	63,334	46,637	16,986	34,914
2008-09	66,610	47,692	18,015	36,729
2009-10	72,045	49,658	19,808	38,755
2010-11	76,153	50,202	20,215	40,860
2011-12	77,428	50,525	21,344	41,324
2012-13	68,986	51,375	31,643	45,537
2013-14	70,666	52,383	33,241	49,184
2014-15	68,731	51,366	33,844	50,429
2015-16	67,261	50,460	34,801	51,829
2016-17	64,889	48,228	34,938	51,633
2017-18	63,087	47,653	36,824	50,959

Source: Ontario Ministry of Training, Colleges and Universities. Enrolments are shown on a full-time equivalent basis.

International Student Enrolment in Ontario Colleges



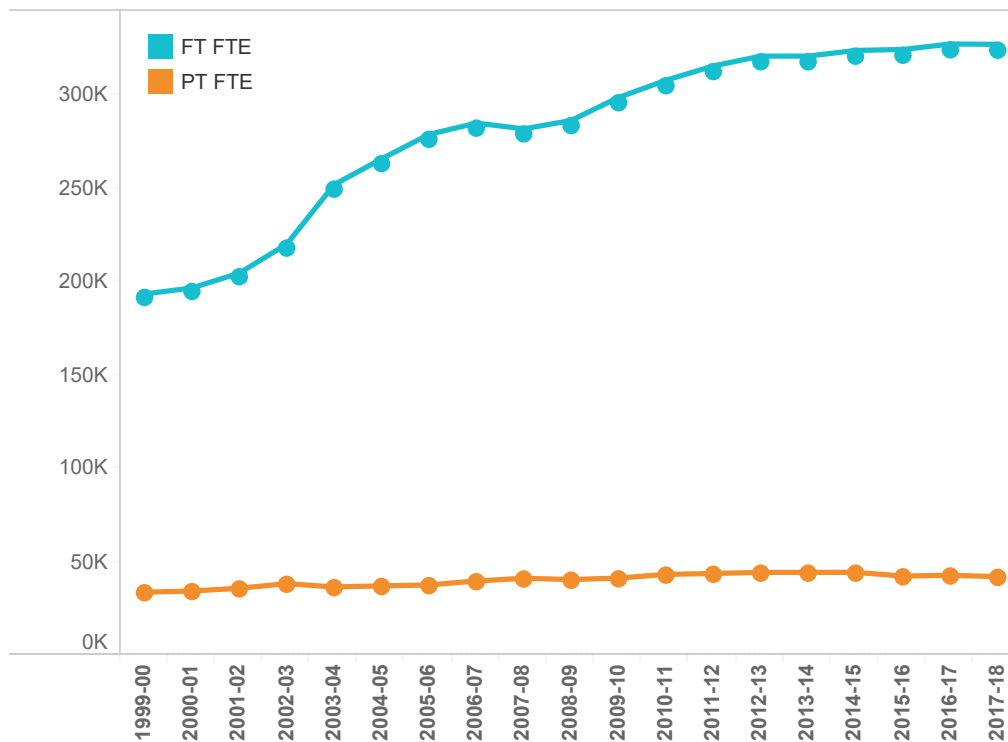
Year	
2000-01	2,777
2001-02	3,707
2002-03	4,685
2003-04	5,855
2004-05	6,193
2005-06	6,172
2006-07	6,722
2007-08	6,958
2008-09	8,025
2009-10	9,861
2010-11	14,576
2011-12	17,889
2012-13	20,371
2013-14	23,531
2014-15	28,198
2015-16	34,115
2016-17*	42,000
2017-18*	55,000
2018-19*	75,000

Source: Colleges Ontario

Full-time November headcount

Numbers for 2016-17, 2017-18 and 2018-19 are not exact

Undergraduate Enrolment in Ontario Universities

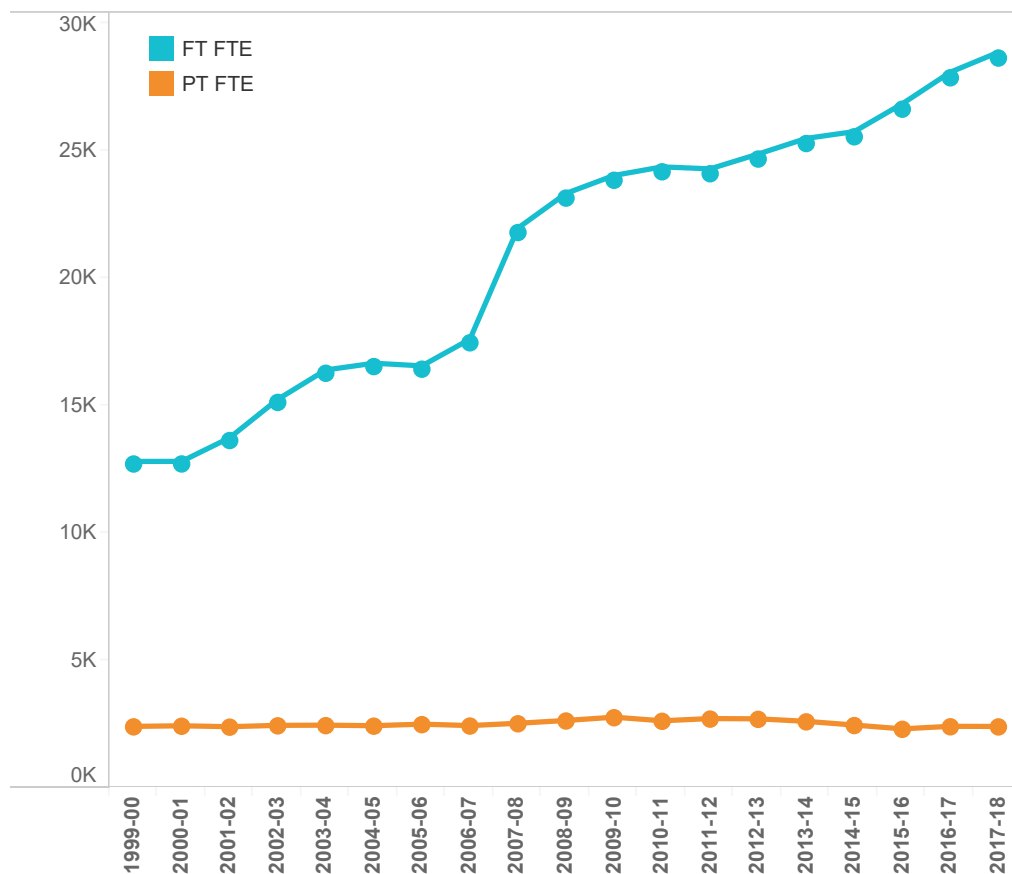


	FT FTE	PT FTE	Total
1999-00	193,496	33,635	227,131
2000-01	196,722	34,273	230,995
2001-02	204,690	35,725	240,415
2002-03	220,196	38,233	258,429
2003-04	252,092	36,410	288,502
2004-05	265,911	37,027	302,938
2005-06	279,064	37,490	316,554
2006-07	285,119	39,618	324,737
2007-08	282,027	41,084	323,111
2008-09	286,518	40,400	326,918
2009-10	298,864	41,185	340,049
2010-11	308,078	43,185	351,263
2011-12	315,743	43,655	359,398
2012-13	321,037	44,242	365,279
2013-14	321,037	44,241	365,279
2014-15	324,071	44,265	368,336
2015-16	324,584	42,266	366,851
2016-17	327,528	42,705	370,233
2017-18	327,337	41,963	369,300

Source: Ontario Ministry of Training, Colleges and Universities

Fiscal full-time equivalents (FFTEs) for undergraduates are calculated based on the portions of a program's normal annual full-time load. For example, if an undergraduate student in a two term per year program is taking the normal full-time load of courses for their program, he/she would count for 0.5 FFTEs per term (a total of 1.0 FFTE for the two-term year). For categorization purposes, the division between full time and part time is made according to a university's recognition of the student as full time or part time. Eligible students are in programs the Ontario Ministry of Training, Colleges and Universities has approved for funding purposes, are Canadian citizens, permanent residents and certain classes of international students such as refugees, and are charged the domestic fee rate.

Master's Degree Enrolment in Ontario Universities

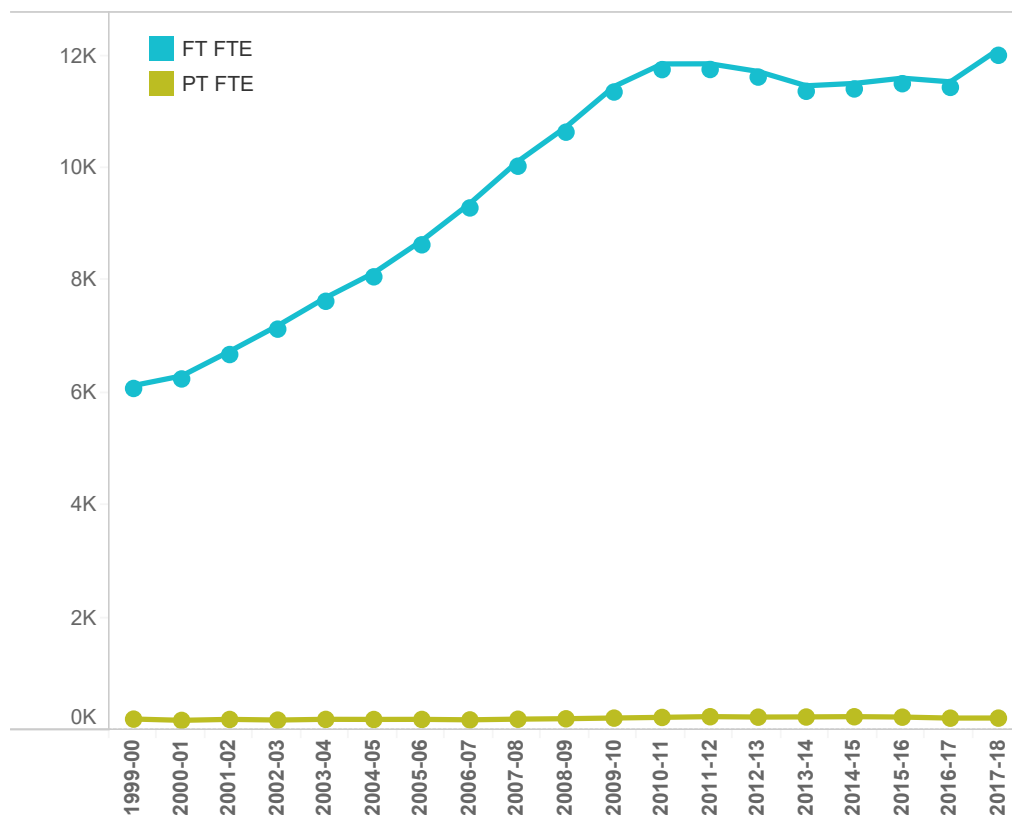


	FT FTE	PT FTE	Total
1999-00	12,812	2,411	15,223
2000-01	12,814	2,435	15,249
2001-02	13,741	2,399	16,140
2002-03	15,249	2,452	17,701
2003-04	16,402	2,459	18,861
2004-05	16,667	2,438	19,105
2005-06	16,563	2,499	19,062
2006-07	17,608	2,443	20,051
2007-08	21,971	2,533	24,504
2008-09	23,333	2,643	25,976
2009-10	24,038	2,773	26,811
2010-11	24,374	2,631	27,005
2011-12	24,297	2,718	27,015
2012-13	24,878	2,708	27,586
2013-14	25,492	2,609	28,101
2014-15	25,759	2,463	28,222
2015-16	26,851	2,314	29,165
2016-17	28,093	2,414	30,507
2017-18	28,874	2,409	31,283

Source: Ontario Ministry of Training, Colleges and Universities

One full-time graduate student equals 1 FFTE per term; one part-time graduate student equals 0.3 FFTE per term. Eligible students are in programs the Ontario Ministry of Training, Colleges and Universities has approved for funding purposes, are Canadian citizens, permanent residents and certain classes of international students such as refugees, and are charged the domestic fee rate.

PhD Enrolment in Ontario Universities

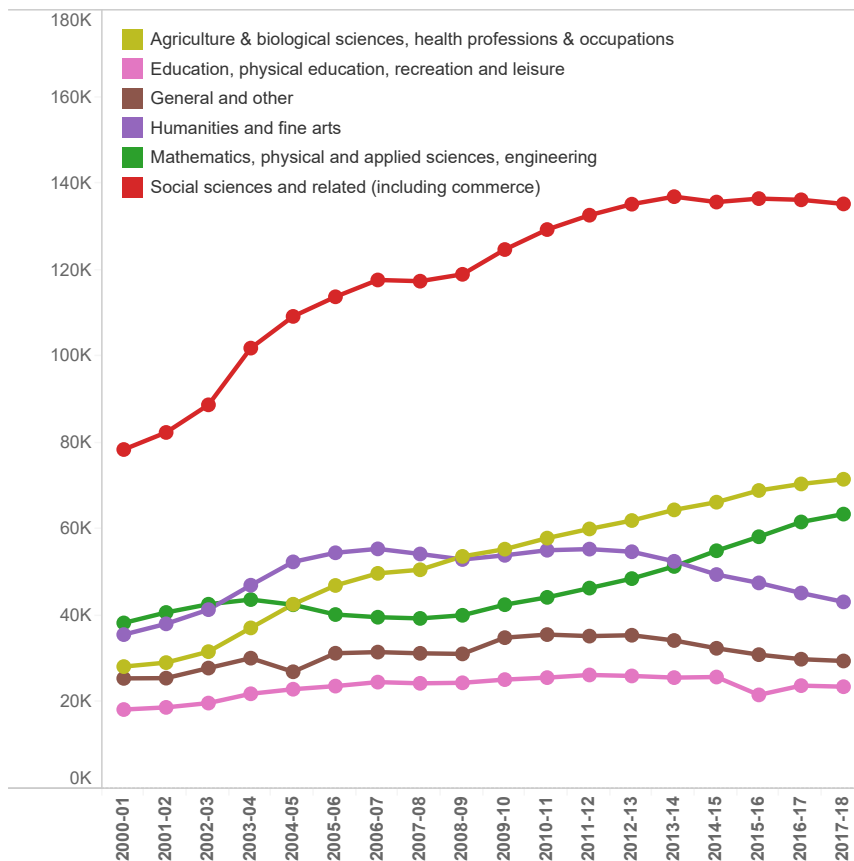


	FT FTE	PT FTE	Total
1999-00	6,135	199	6,334
2000-01	6,306	176	6,482
2001-02	6,744	193	6,937
2002-03	7,200	181	7,381
2003-04	7,700	194	7,894
2004-05	8,139	192	8,331
2005-06	8,714	193	8,907
2006-07	9,376	185	9,561
2007-08	10,125	197	10,322
2008-09	10,736	205	10,941
2009-10	11,457	217	11,674
2010-11	11,859	229	12,088
2011-12	11,861	242	12,103
2012-13	11,725	234	11,959
2013-14	11,470	237	11,707
2014-15	11,512	242	11,754
2015-16	11,606	234	11,840
2016-17	11,540	216	11,756
2017-18	12,116	217	12,333

Source: Ontario Ministry of Training, Colleges and Universities

One full-time graduate student equals 1 FFTE per term; one part-time graduate student equals 0.3 FFTE per term. Eligible students are in programs the Ontario Ministry of Training, Colleges and Universities has approved for funding purposes, are Canadian citizens, permanent residents and certain classes of international students such as refugees, and are charged the domestic fee rate.

Undergraduate Enrolment in Ontario Universities by Field of Study

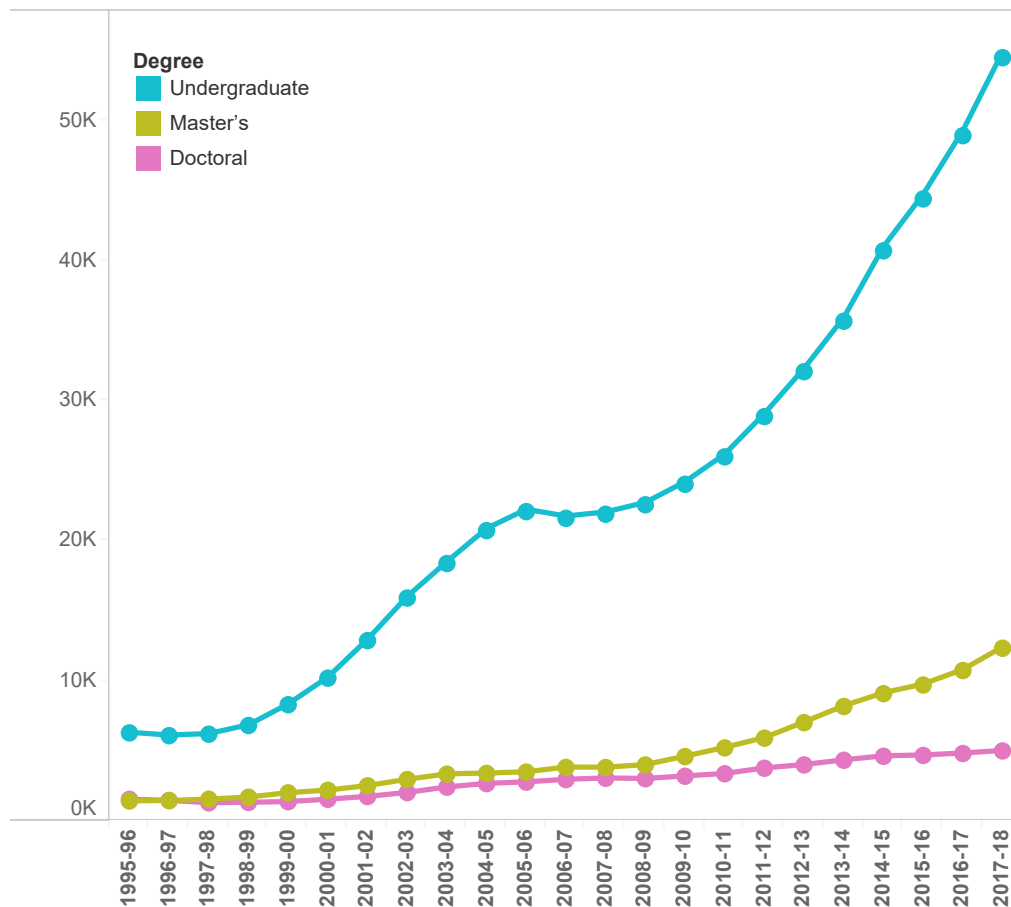


	Education, physical education, recreation and leisure	Humanities and fine arts	Social sciences and related (including commerce)	Agriculture & biological sciences, health professions & occupations	Mathematics, physical and applied sciences, engineering	General and other
2000-01	18,351	35,682	78,483	28,283	38,376	25,556
2001-02	18,847	38,169	82,430	29,202	40,795	25,610
2002-03	19,843	41,453	88,816	31,737	42,700	27,941
2003-04	21,994	47,097	101,934	37,227	43,780	30,231
2004-05	23,050	52,497	109,267	42,699	42,582	27,083
2005-06	23,770	54,603	113,802	47,042	40,320	31,370
2006-07	24,691	55,506	117,693	49,840	39,702	31,632
2007-08	24,412	54,324	117,412	50,678	39,424	31,352
2008-09	24,534	53,050	119,001	53,767	40,145	31,216
2009-10	25,273	54,013	124,734	55,437	42,597	34,971
2010-11	25,731	55,192	129,354	57,995	44,296	35,685
2011-12	26,345	55,451	132,672	60,118	46,438	35,330
2012-13	26,118	54,841	135,219	62,063	48,628	35,533
2013-14	25,733	52,628	136,959	64,524	51,443	34,317
2014-15	25,868	49,568	135,710	66,304	55,073	32,515
2015-16	21,733	47,635	136,509	69,009	58,312	31,042
2016-17	23,877	45,292	136,229	70,517	61,726	29,991

Source: Ontario Ministry of Training, Colleges and Universities

Fiscal full-time equivalents (FFTEs) for undergraduates are calculated based on the portions of a program's normal annual full-time load. For example, if an undergraduate student in a two-term-per-year program is taking the normal full-time load of courses for their program, he/she would count for 0.5 FFTEs per term (A total of 1.0 FFTE for the two-term year). For categorization purposes, the division between full time and part time is made according to a university's recognition of the student as full time or part time. Eligible students are in programs the Ontario Ministry of Training, Colleges and Universities has approved for funding purposes, are Canadian citizens, permanent residents and certain classes of international students such as refugees, and are charged the domestic fee rate. Field of study uses the USIS coding system.

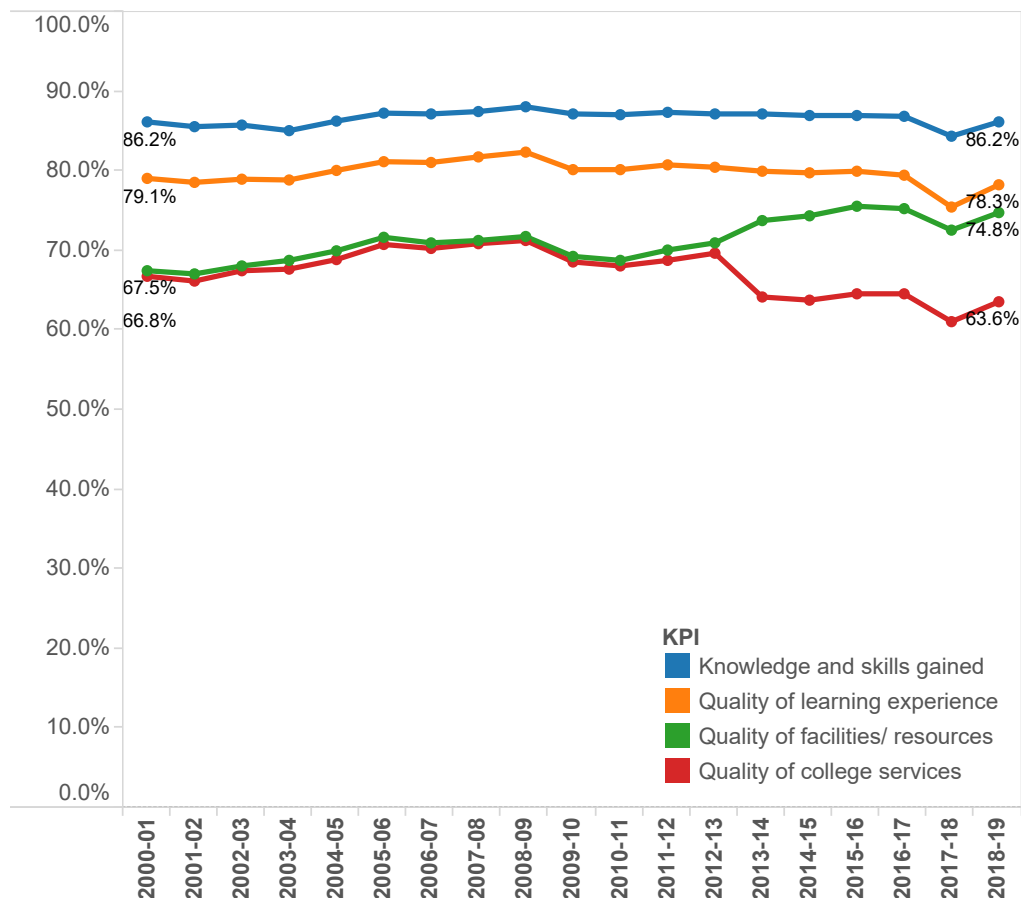
International Student Enrolment in Ontario Universities



	Undergraduate	Master's	Doctoral	Total
1995-96	6,314	1,418	1,538	9,314
1996-97	6,114	1,444	1,454	9,012
1997-98	6,220	1,546	1,285	9,051
1998-99	6,846	1,689	1,314	9,849
1999-00	8,338	2,004	1,367	11,709
2000-01	10,248	2,187	1,538	13,973
2001-02	12,950	2,511	1,735	17,196
2002-03	16,008	2,958	2,022	20,988
2003-04	18,492	3,348	2,409	24,249
2004-05	20,860	3,400	2,666	26,926
2005-06	22,223	3,494	2,773	28,490
2006-07	21,741	3,830	2,956	28,527
2007-08	22,035	3,823	3,051	28,909
2008-09	22,715	4,004	3,018	29,737
2009-10	24,189	4,609	3,197	31,995
2010-11	26,161	5,235	3,374	34,770
2011-12	29,056	5,935	3,771	38,762
2012-13	32,285	7,050	4,011	43,346
2013-14	35,913	8,211	4,347	48,471
2014-15	40,974	9,134	4,632	54,740
2015-16	44,704	9,756	4,693	59,153
2016-17	49,253	10,796	4,831	64,880
2017-18	54,000	12,000	5,000	71,000

Source: Ontario Ministry of Training, Colleges and Universities. Enrolments shown as headcounts.

College Student Satisfaction



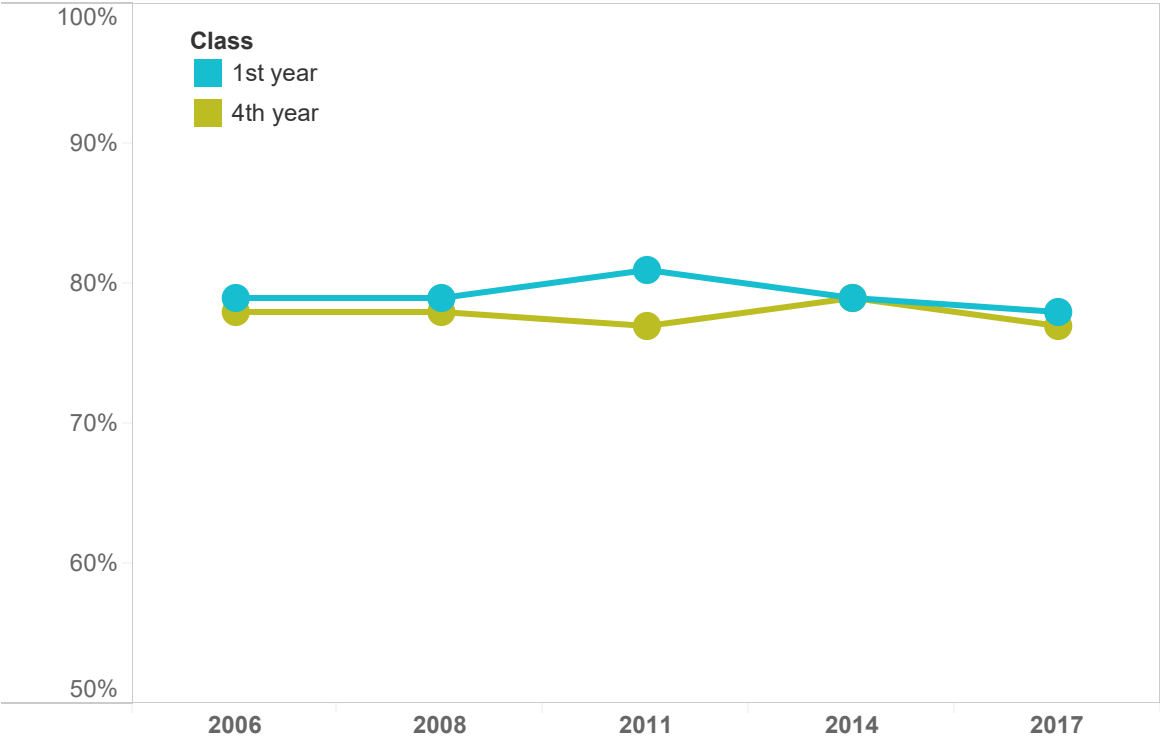
	% satisfied / very satisfied				
	Knowledge and skills gained	Overall Student satisfaction *	Quality of college services	Quality of facilities/ resources	Quality of learning experience
2000-01	86.2%	74.9%	66.8%	67.5%	79.1%
2001-02	85.6%	74.4%	66.2%	67.1%	78.6%
2002-03	85.8%	75.1%	67.5%	68.1%	79.0%
2003-04	85.1%	75.1%	67.7%	68.8%	78.9%
2004-05	86.3%	76.3%	68.9%	70.0%	80.1%
2005-06	87.3%	77.8%	70.8%	71.7%	81.2%
2006-07	87.2%	77.4%	70.3%	71.0%	81.1%
2007-08	87.5%	77.9%	70.9%	71.3%	81.8%
2008-09	88.1%	78.4%	71.3%	71.8%	82.4%
2009-10	87.2%	76.3%	68.6%	69.3%	80.2%
2010-11	87.1%	76.1%	68.1%	68.8%	80.2%
2011-12	87.4%	76.8%	68.8%	70.1%	80.8%
2012-13	87.2%	77.1%	69.7%	71.0%	80.5%
2013-14	87.2%	76.3%	64.2%	73.8%	80.0%
2014-15	87.0%	76.2%	63.8%	74.4%	79.8%
2015-16	87.0%	76.5%	64.6%	75.6%	80.0%
2016-17	86.8%	76.5%	64.6%	75.2%	79.5%

Source: Colleges Ontario and "College Student Satisfaction Surveys"

For College Student Satisfaction, the KPI reporting year and the survey year are the same.

* Student satisfaction reflects the average of the four capstone questions

Ontario University Students who evaluated their Entire Educational Experience as Good or Excellent

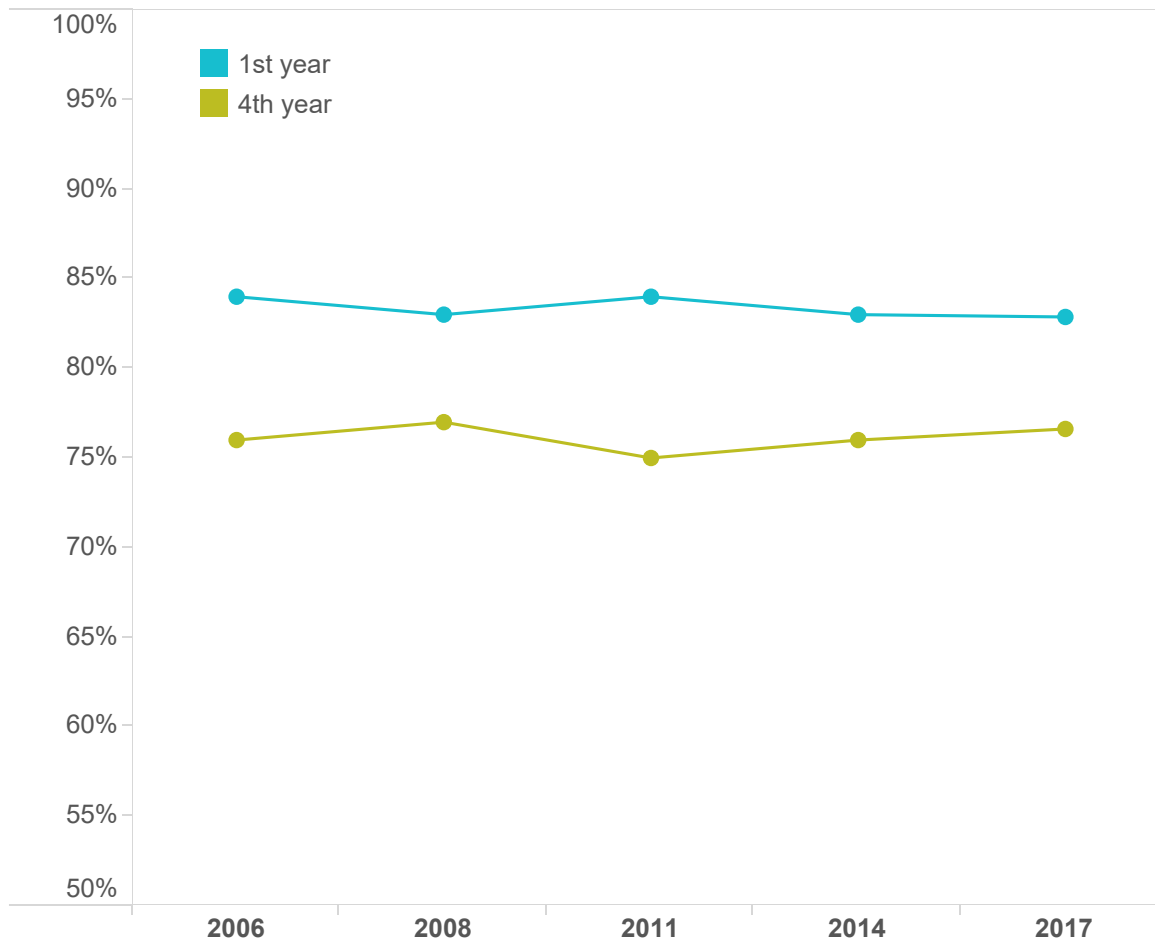


	1st year	4th year
2006	79%	78%
2008	79%	78%
2011	81%	77%
2014	79%	79%
2017	78%	77%

Source: National Survey of Student Engagement as reported on institutional websites

Ontario University Students who evaluated their Entire Educational Experience as Good or Excellent. All statistics weighted by gender, enrolment status and institutional size.

Ontario University Students who would attend the same Institution

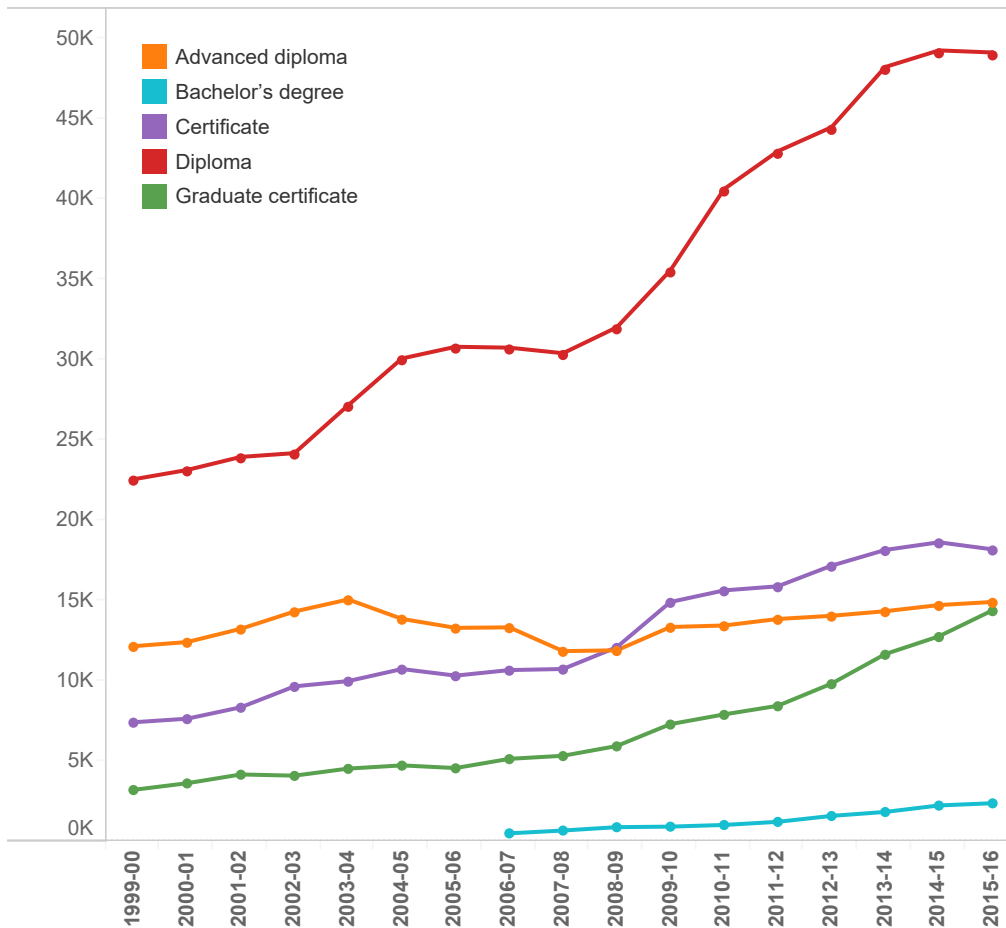


	1st year	4th year
2006	84%	76%
2008	83%	77%
2011	84%	75%
2014	83%	76%
2017	83%	77%

Source: National Survey of Student Engagement as reported on institutional websites

Ontario University Students who would attend the same Institution (definitely yes or probably yes). All statistics weighted by gender, enrolment status, and institutional size.

College Graduates by Credential

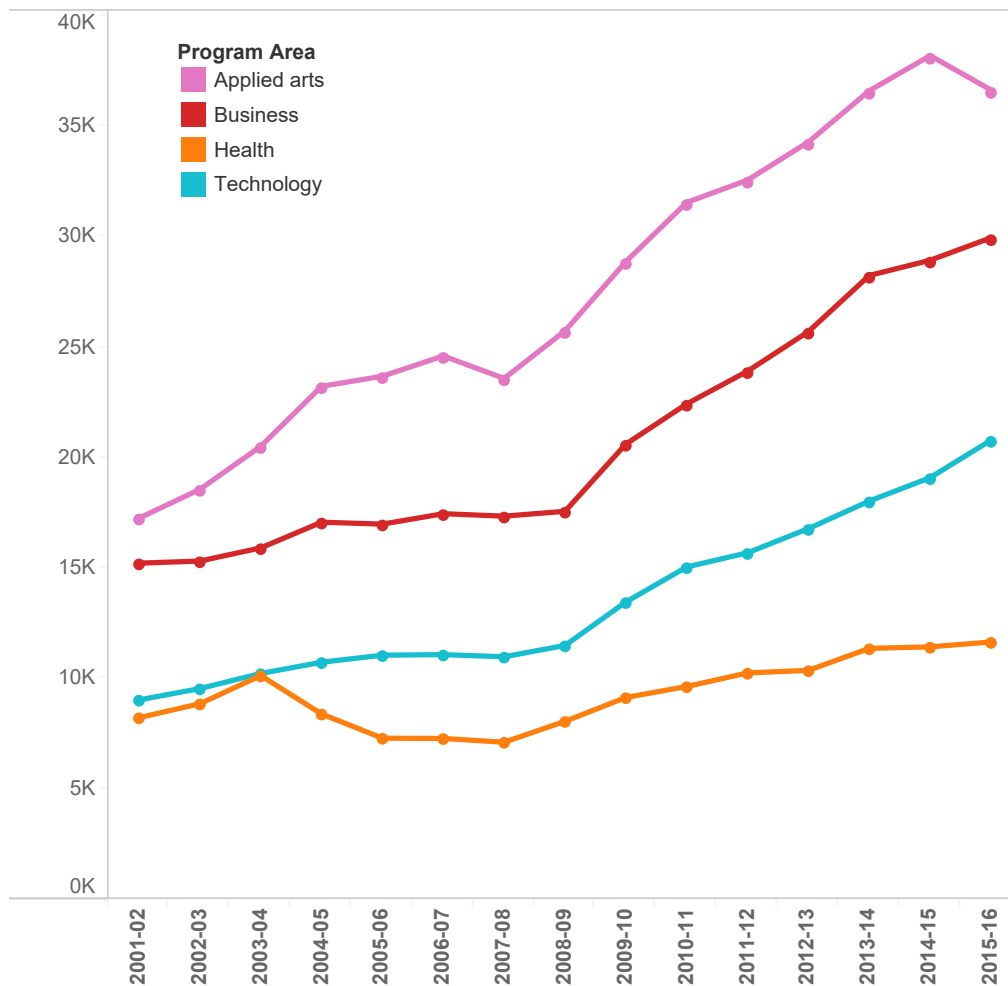


Year	Certificate	Diploma	Advanced diploma	Graduate certificate	Bachelor's degree	Total
1999-00	7,421	22,555	12,159	3,211		45,346
2000-01	7,643	23,135	12,418	3,624		46,820
2001-02	8,355	23,950	13,242	4,170		49,717
2002-03	9,658	24,186	14,321	4,096		52,261
2003-04	9,986	27,168	15,071	4,536		56,761
2004-05	10,737	30,080	13,861	4,736		59,414
2005-06	10,326	30,810	13,302	4,569		59,007
2006-07	10,672	30,755	13,333	5,143	503	60,406
2007-08	10,740	30,408	11,852	5,334	678	59,012
2008-09	12,094	32,018	11,902	5,941	887	62,842
2009-10	14,914	35,571	13,355	7,305	921	72,066
2010-11	15,635	40,631	13,449	7,911	1,025	78,651
2011-12	15,891	42,989	13,854	8,448	1,220	82,402
2012-13	17,175	44,484	14,053	9,828	1,589	87,129
2013-14	18,155	48,236	14,338	11,667	1,836	94,232
2014-15	18,633	49,271	14,722	12,774	2,239	97,639
2015-16	18,189	49,141	14,915	14,395	2,380	99,020

Source: Ontario Ministry of Training, Colleges and Universities.

Includes all graduates, domestic, international and other funded. Year reflects the year of graduation.

College Graduates by Program Area

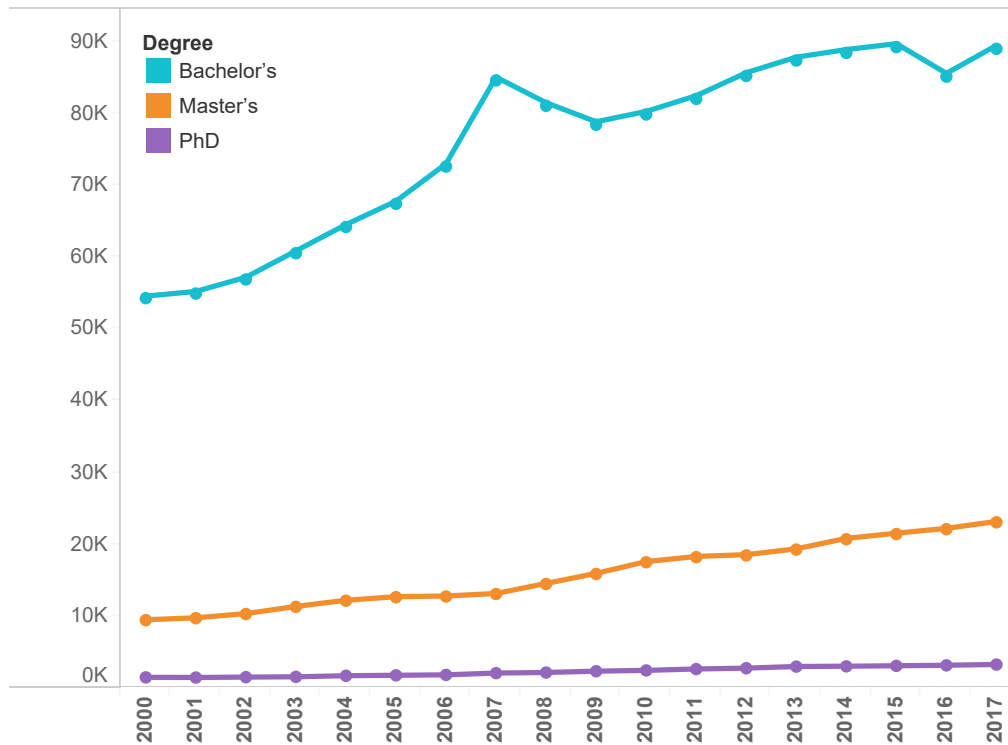


	Applied arts	Business	Health	Technology
2001-02	17,254	15,216	8,223	9,024
2002-03	18,558	15,312	8,852	9,539
2003-04	20,503	15,908	10,126	10,224
2004-05	23,222	17,071	8,390	10,731
2005-06	23,681	16,984	7,292	11,050
2006-07	24,597	17,455	7,279	11,075
2007-08	23,579	17,344	7,110	10,979
2008-09	25,731	17,565	8,056	11,491
2009-10	28,866	20,607	9,135	13,458
2010-11	31,546	22,427	9,633	15,045
2011-12	32,560	23,908	10,247	15,687
2012-13	34,284	25,700	10,364	16,781
2013-14	36,603	28,241	11,359	18,029
2014-15	38,193	28,930	11,427	19,089
2015-16	36,639	29,948	11,648	20,785

Source: Ontario Ministry of Training, Colleges and Universities

Includes all graduates, domestic, international and other funded. Year reflects the year of graduation.

University Degrees Granted by Credential

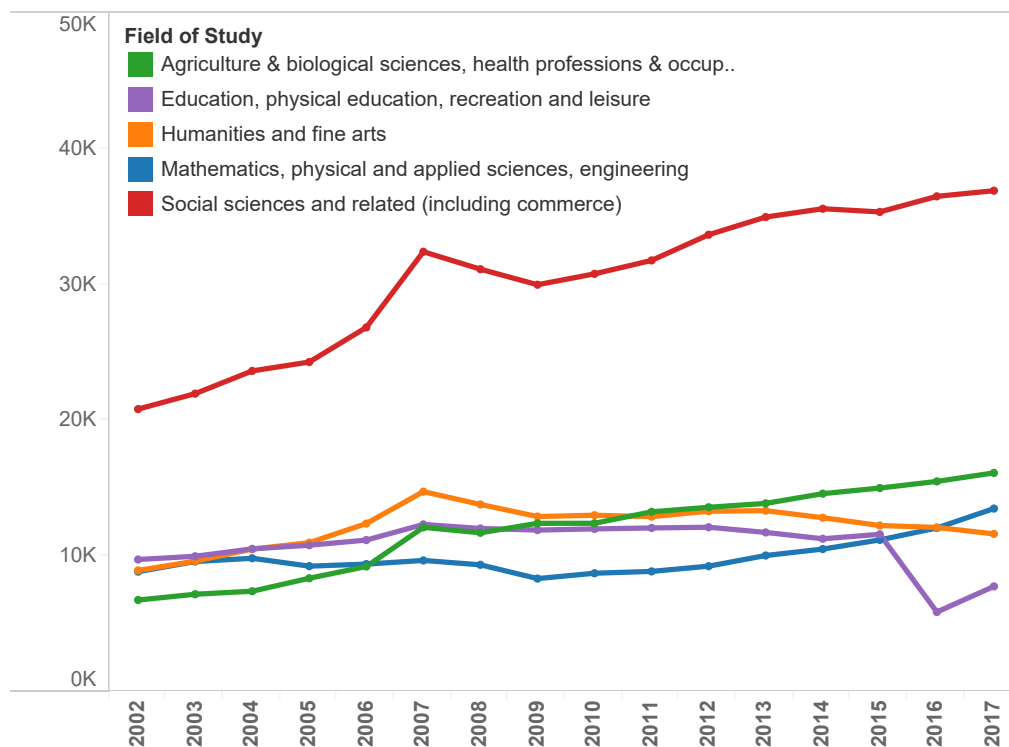


	Bachelor's	Master's	PhD	Total
2000	54,241	9,422	1,456	65,119
2001	54,886	9,693	1,431	66,010
2002	56,852	10,275	1,484	68,611
2003	60,499	11,270	1,527	73,296
2004	64,153	12,123	1,674	77,950
2005	67,381	12,617	1,737	81,735
2006	72,566	12,712	1,796	87,074
2007	84,565	13,059	2,041	99,665
2008	81,024	14,453	2,123	97,600
2009	78,384	15,849	2,306	96,539
2010	79,818	17,477	2,416	99,711
2011	81,984	18,190	2,606	102,780
2012	85,178	18,437	2,726	106,341
2013	87,327	19,247	2,951	109,525
2014	88,382	20,689	2,989	112,060
2015	89,197	21,408	3,053	113,658
2016	85,082	22,081	3,124	110,287
2017	88,954	23,038	3,235	115,227

Source: Ontario Ministry of Training, Colleges and Universities

Includes all graduates, domestic, international, and other funded.

University Degrees Granted by Field of Study

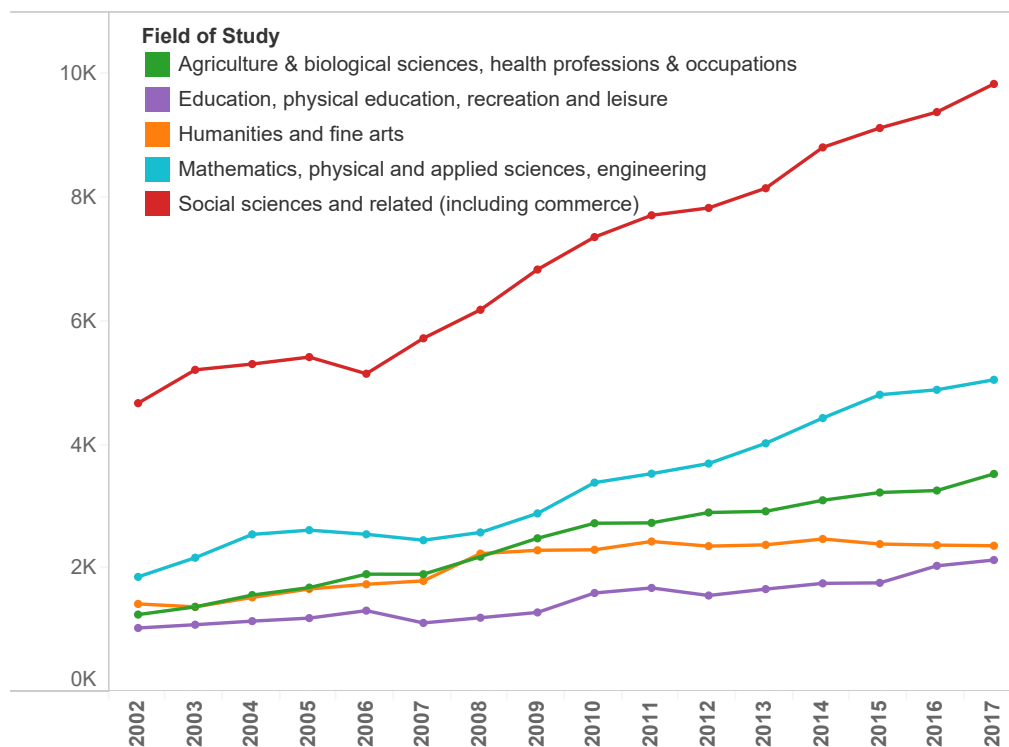


	Agriculture & biological sciences, health professions & occupations	Education, physical education, recreation and leisure	Humanities and fine arts	Mathematics, physical and applied sciences, engineering	Social sciences and related (including commerce)
2002	6,760	9,741	8,938	8,849	20,819
2003	7,185	9,982	9,622	9,594	21,957
2004	7,408	10,525	10,511	9,834	23,631
2005	8,362	10,796	10,982	9,253	24,285
2006	9,229	11,173	12,389	9,404	26,833
2007	12,110	12,327	14,743	9,674	32,408
2008	11,709	12,028	13,797	9,352	31,121
2009	12,408	11,909	12,908	8,338	29,978
2010	12,410	11,997	13,003	8,732	30,779
2011	13,254	12,066	12,899	8,867	31,768
2012	13,591	12,120	13,297	9,252	33,660
2013	13,876	11,737	13,337	10,037	34,961
2014	14,591	11,270	12,820	10,512	35,574
2015	15,006	11,598	12,247	11,185	35,339
2016	15,494	5,877	12,107	12,064	36,486
2017	16,122	7,761	11,628	13,494	36,903

Source: Ontario Ministry of Training, Colleges and Universities

Includes all graduates, domestic, international and other funded.

Master's Degrees Granted by Field of Study

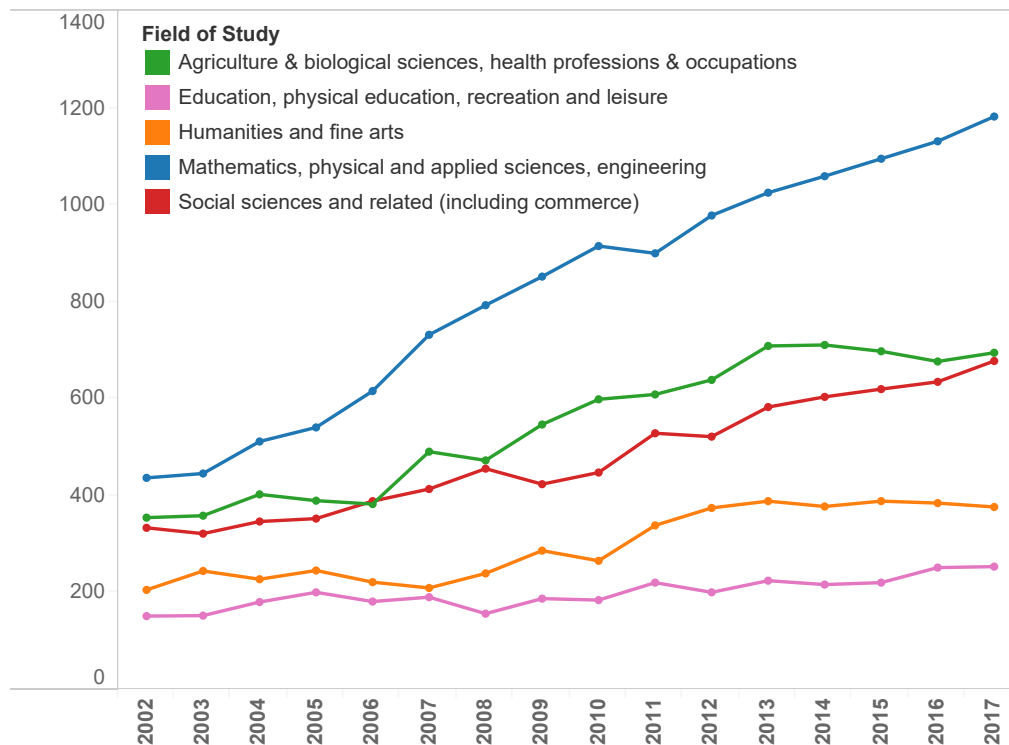


	Agriculture & biological sciences, health professions & occupations	Education, physical education, recreation and leisure	Humanities and fine arts	Mathematics, physical and applied sciences, engineering	Social sciences and related (including commerce)
2002	1,251	1,034	1,424	1,862	4,676
2003	1,376	1,087	1,376	2,172	5,216
2004	1,567	1,145	1,529	2,550	5,310
2005	1,688	1,194	1,666	2,619	5,423
2006	1,906	1,315	1,742	2,552	5,153
2007	1,905	1,116	1,797	2,456	5,727
2008	2,189	1,200	2,239	2,582	6,189
2009	2,487	1,286	2,293	2,890	6,841
2010	2,731	1,601	2,301	3,389	7,367
2011	2,737	1,683	2,435	3,534	7,720
2012	2,905	1,560	2,360	3,698	7,839
2013	2,924	1,664	2,381	4,026	8,158
2014	3,103	1,757	2,476	4,435	8,820
2015	3,229	1,765	2,394	4,813	9,134
2016	3,261	2,041	2,377	4,893	9,392
2017					

Source: Ontario Ministry of Training, Colleges and Universities

Includes all graduates, domestic, international and other funded.

Doctorate Degrees Granted by Field of Study

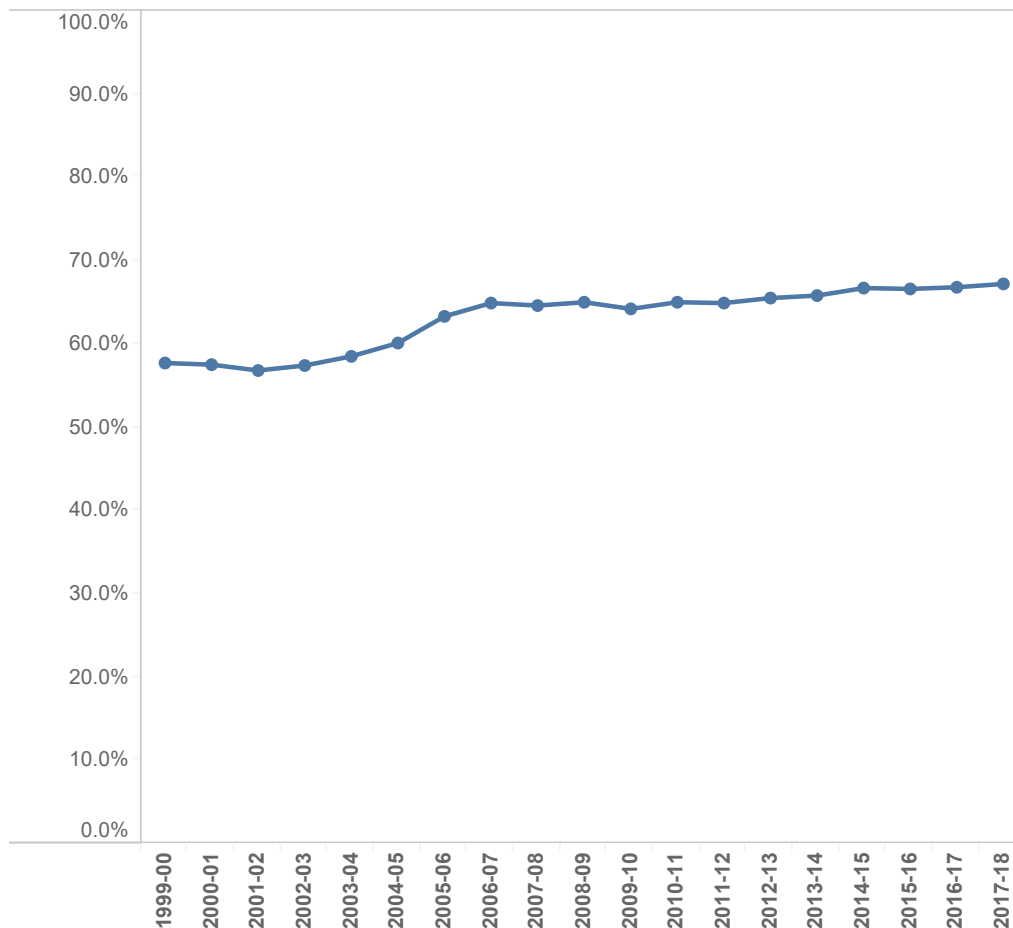


	Agriculture & biological sciences, health professions & occupations	Education, physical education, recreation and leisure	Humanities and fine arts	Mathematics, physical and applied sciences, engineering	Social sciences and related (including commerce)
2002	355	152	206	437	334
2003	359	153	245	446	322
2004	403	181	228	512	347
2005	390	201	246	541	353
2006	383	182	222	616	389
2007	491	191	210	732	414
2008	473	157	240	793	456
2009	547	188	287	852	424
2010	599	185	266	915	448
2011	609	221	339	900	529
2012	639	201	375	978	522
2013	709	225	389	1,025	583
2014	711	217	378	1,059	604
2015	698	221	389	1,095	620
2016	677	252	385	1,131	635

Source: Ontario Ministry of Training, Colleges and Universities

Includes all graduates, domestic, international and other funded.

Graduation Rate for Ontario Colleges

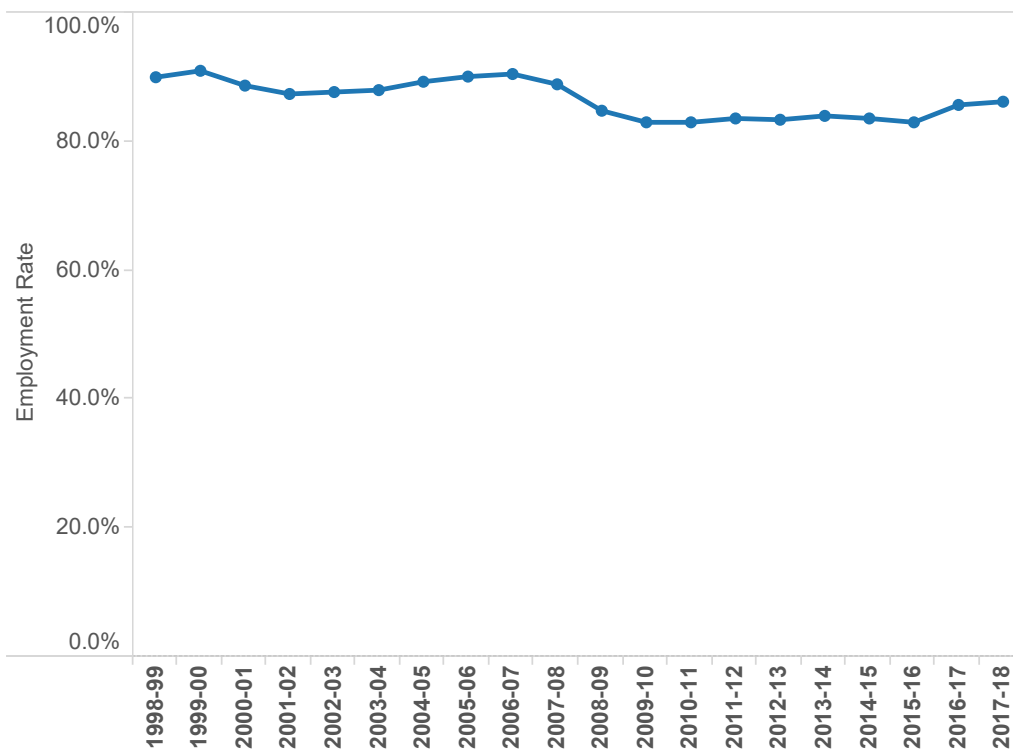


Year	Graduation Rate
1999-00	57.7%
2000-01	57.5%
2001-02	56.8%
2002-03	57.4%
2003-04	58.5%
2004-05	60.1%
2005-06	63.3%
2006-07	64.9%
2007-08	64.6%
2008-09	65.0%
2009-10	64.2%
2010-11	65.0%
2011-12	64.9%
2012-13	65.5%
2013-14	65.8%
2014-15	66.7%
2015-16	66.6%
2016-17	66.8%
2017-18	67.2%

Source: Colleges Ontario

The graduation rate for college certificate and diploma programs is calculated as the percentage of students who graduated from their college within twice the time for the standard program duration. For four year degrees, it is calculated as the percentage of students who graduated within seven years of entering.

Graduate Employment Rate for Ontario Colleges

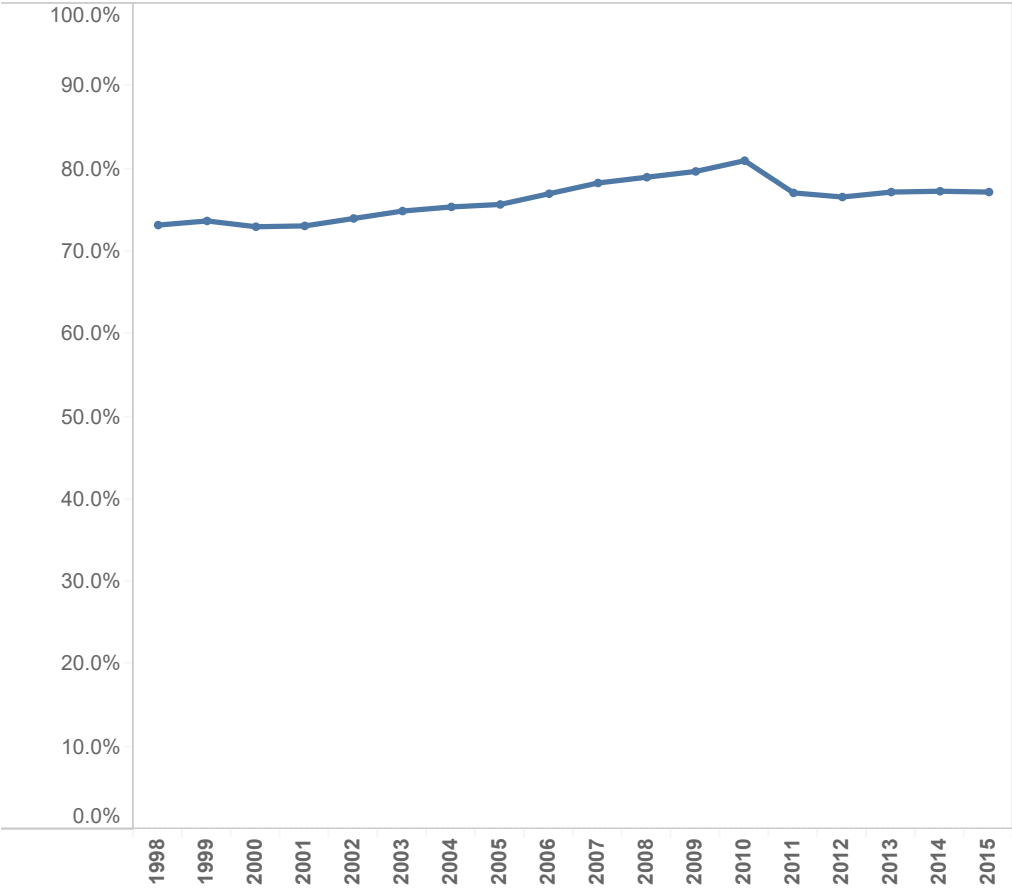


Graduate Employment Rate	
1998-99	90.0%
1999-00	91.0%
2000-01	88.7%
2001-02	87.4%
2002-03	87.7%
2003-04	88.0%
2004-05	89.3%
2005-06	90.1%
2006-07	90.5%
2007-08	88.9%
2008-09	84.8%
2009-10	83.0%
2010-11	83.0%
2011-12	83.6%
2012-13	83.4%
2013-14	84.0%
2014-15	83.6%
2015-16	83.0%
2016-17	85.7%
2017-18	86.2%

Source: Colleges Ontario

Graduates from Ontario colleges are surveyed six months after graduation.
Year reflects graduation year.

Graduation Rate for Ontario Universities

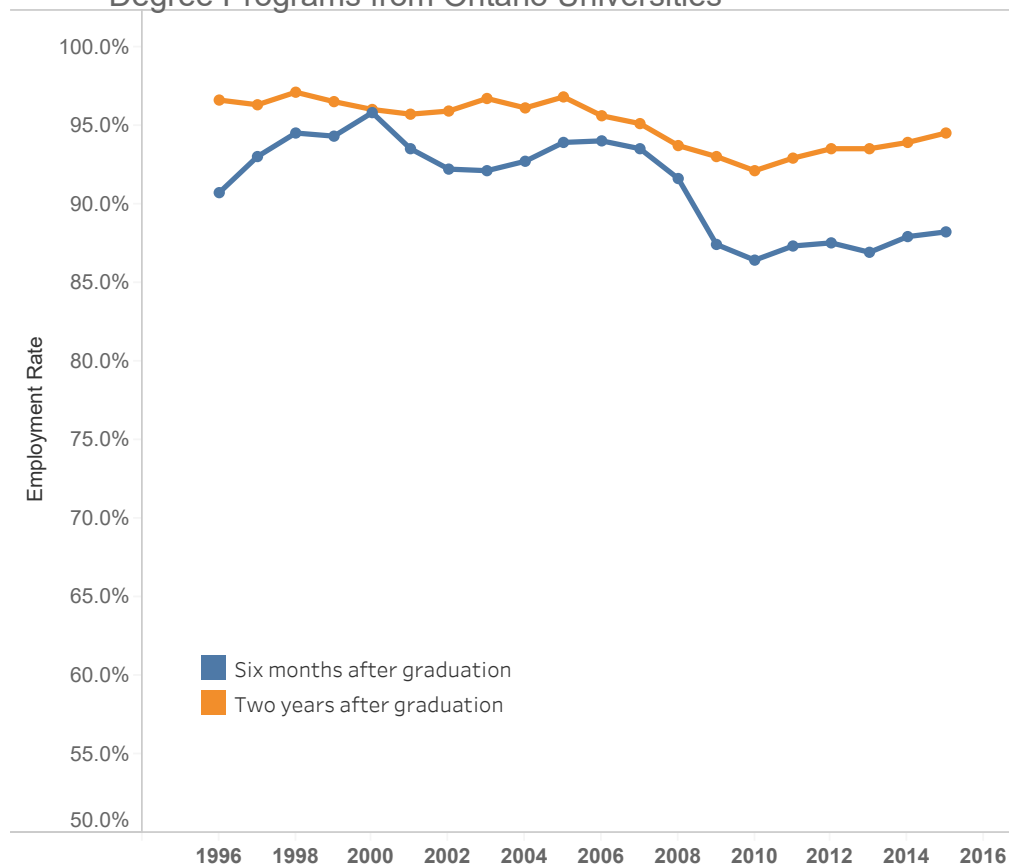


Graduation Rate	
1998	73.2%
1999	73.7%
2000	73.0%
2001	73.1%
2002	74.0%
2003	74.9%
2004	75.4%
2005	75.7%
2006	77.0%
2007	78.3%
2008	79.0%
2009	79.7%
2010	81.0%
2011	77.1%
2012	76.6%
2013	77.2%
2014	77.3%
2015	77.2%

Source: Ontario Ministry of Training, Colleges and Universities

Calculated as the percentage of students who graduated from their university within seven years of entering, from any program.

Graduate Employment Rate for Graduates of Undergraduate Degree Programs from Ontario Universities

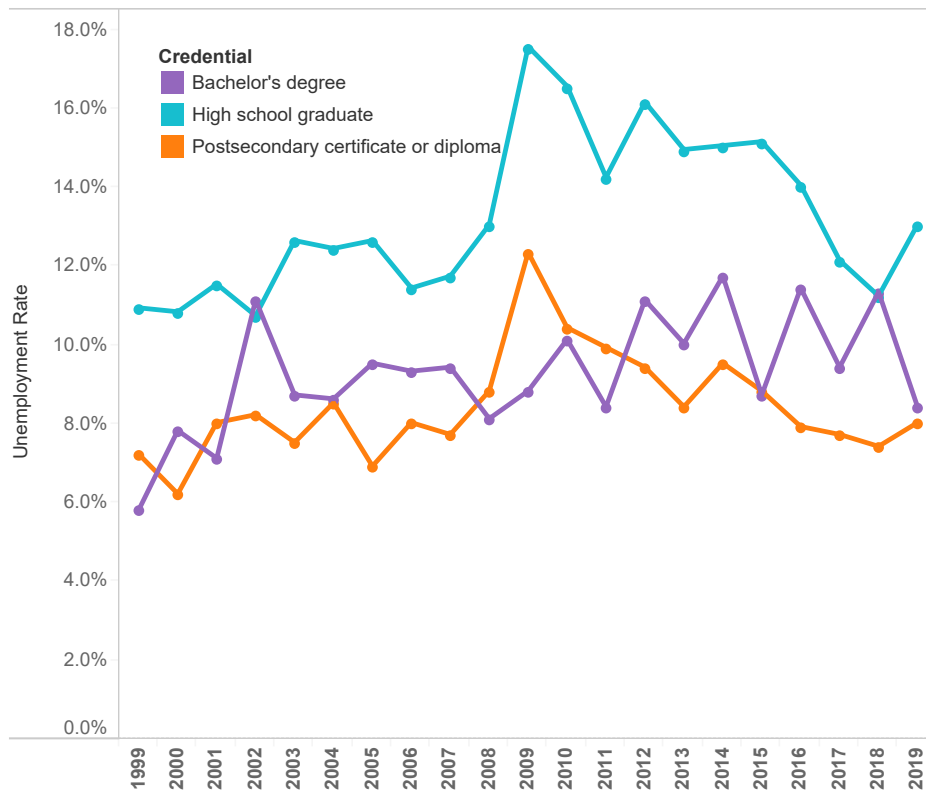


	Six months after graduation	Two years after graduation
1996	90.8%	96.7%
1997	93.1%	96.4%
1998	94.6%	97.2%
1999	94.4%	96.6%
2000	95.9%	96.1%
2001	93.6%	95.8%
2002	92.3%	96.0%
2003	92.2%	96.8%
2004	92.8%	96.2%
2005	94.0%	96.9%
2006	94.1%	95.7%
2007	93.6%	95.2%
2008	91.7%	93.8%
2009	87.5%	93.1%
2010	86.5%	92.2%
2011	87.4%	93.0%
2012	87.6%	93.6%
2013	87.0%	93.6%
2014	88.0%	94.0%
2015	88.3%	94.6%

Source: Ontario University Graduate Survey, Council of Ontario Universities

Graduate Employment Rate is the number of graduates of bachelors or first professional degree programs expressed as a percentage of the labour force six months and two years after graduation. Graduates are surveyed two years after graduation. Year reflects graduation year.

Annual Ontario Unemployment Rate by Credential (population aged 15-24 years)



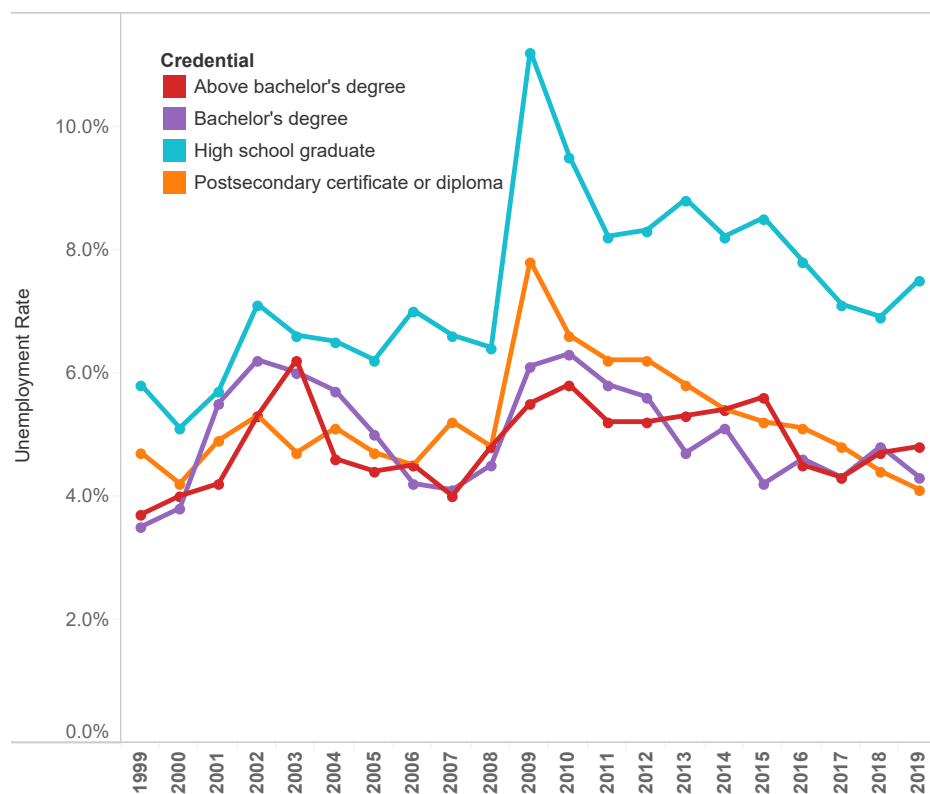
	High school graduate	Bachelor's degree	Postsecondary certificate or diploma
1999	10.9%	5.8%	7.2%
2000	10.8%	7.8%	6.2%
2001	11.5%	7.1%	8.0%
2002	10.7%	11.1%	8.2%
2003	12.6%	8.7%	7.5%
2004	12.4%	8.6%	8.5%
2005	12.6%	9.5%	6.9%
2006	11.4%	9.3%	8.0%
2007	11.7%	9.4%	7.7%
2008	13.0%	8.1%	8.8%
2009	17.5%	8.8%	12.3%
2010	16.5%	10.1%	10.4%
2011	14.2%	8.4%	9.9%
2012	16.1%	11.1%	9.4%
2013	14.9%	10.0%	8.4%
2014	15.0%	11.7%	9.5%
2015	15.1%	8.7%	8.8%
2016	14.0%	11.4%	7.9%
2017	12.1%	9.4%	7.7%
2018	11.2%	11.3%	7.4%
2019	13.0%	8.4%	8.0%

Source: Statistics Canada. Table 282-0004 - Labour force survey estimates (LFS).

Unemployment rate is calculated as the percent of the labour force that is not working. The labour force is defined as the population who are available for work.

Postsecondary certificate/diploma includes completed certificates (including trade certificates or diplomas from educational institutions beyond the secondary level such as vocational schools, apprenticeship training, community colleges, collège d'enseignement général et professionnel (CÉGEP), and schools of nursing. Also included are certificates below a Bachelor's degree obtained at a university.

Annual Ontario Unemployment Rate by Credential (population aged 25-44 years)

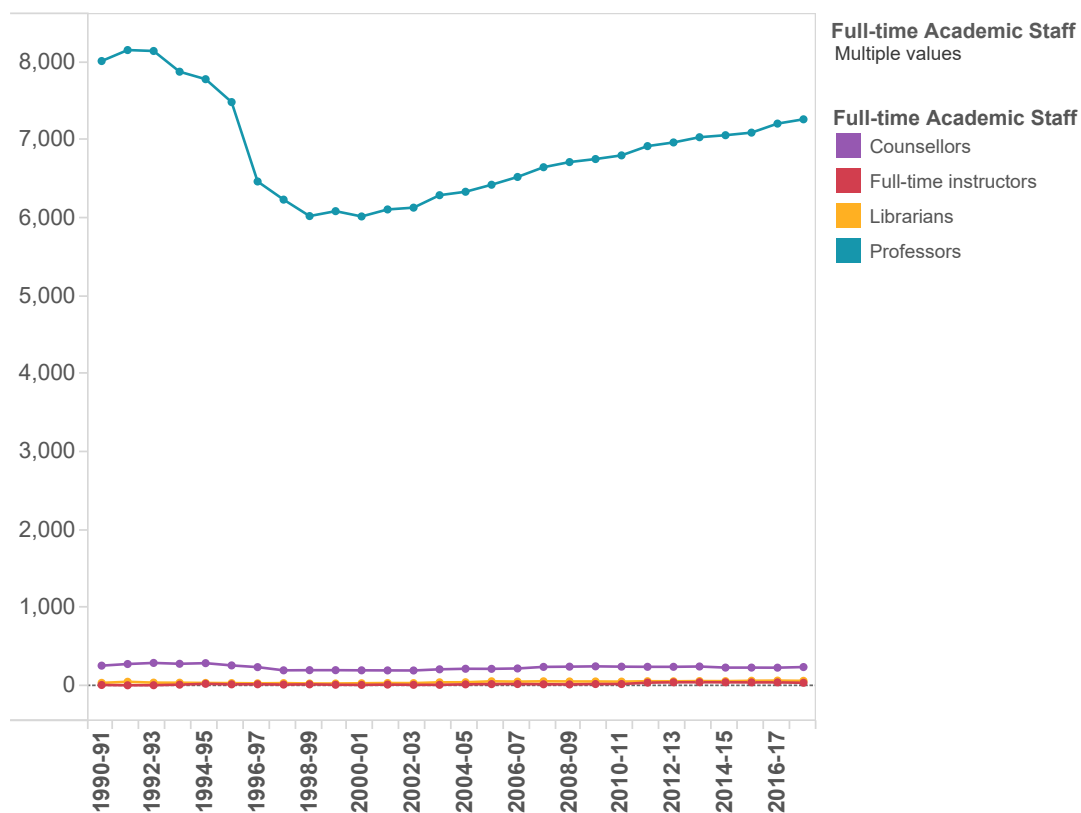


	High school graduate	Bachelor's degree	Postsecondary certificate or diploma	Above bachelor's degree
1999	5.8%	3.5%	4.7%	3.7%
2000	5.1%	3.8%	4.2%	4.0%
2001	5.7%	5.5%	4.9%	4.2%
2002	7.1%	6.2%	5.3%	5.3%
2003	6.6%	6.0%	4.7%	6.2%
2004	6.5%	5.7%	5.1%	4.6%
2005	6.2%	5.0%	4.7%	4.4%
2006	7.0%	4.2%	4.5%	4.5%
2007	6.6%	4.1%	5.2%	4.0%
2008	6.4%	4.5%	4.8%	4.8%
2009	11.2%	6.1%	7.8%	5.5%
2010	9.5%	6.3%	6.6%	5.8%
2011	8.2%	5.8%	6.2%	5.2%
2012	8.3%	5.6%	6.2%	5.2%
2013	8.8%	4.7%	5.8%	5.3%
2014	8.2%	5.1%	5.4%	5.4%
2015	8.5%	4.2%	5.2%	5.6%
2016	7.8%	4.6%	5.1%	4.5%
2017	7.1%	4.3%	4.8%	4.3%
2018	6.9%	4.8%	4.4%	4.7%
2019	7.5%	4.3%	4.1%	4.8%

Source: Statistics Canada. Table 282-0004 - Labour force survey estimates (LFS).

Unemployment rate is calculated as the percent of the labour force that is not working. The labour force is defined as the population who are available for work. Postsecondary certificate/diploma includes completed certificates (including trade certificates or diplomas from educational institutions beyond the secondary level such as vocational schools, apprenticeship training, community colleges, collège d'enseignement général et professionnel (CÉGEP), and schools of nursing. Also included are certificates below a Bachelor's degree obtained at a university.

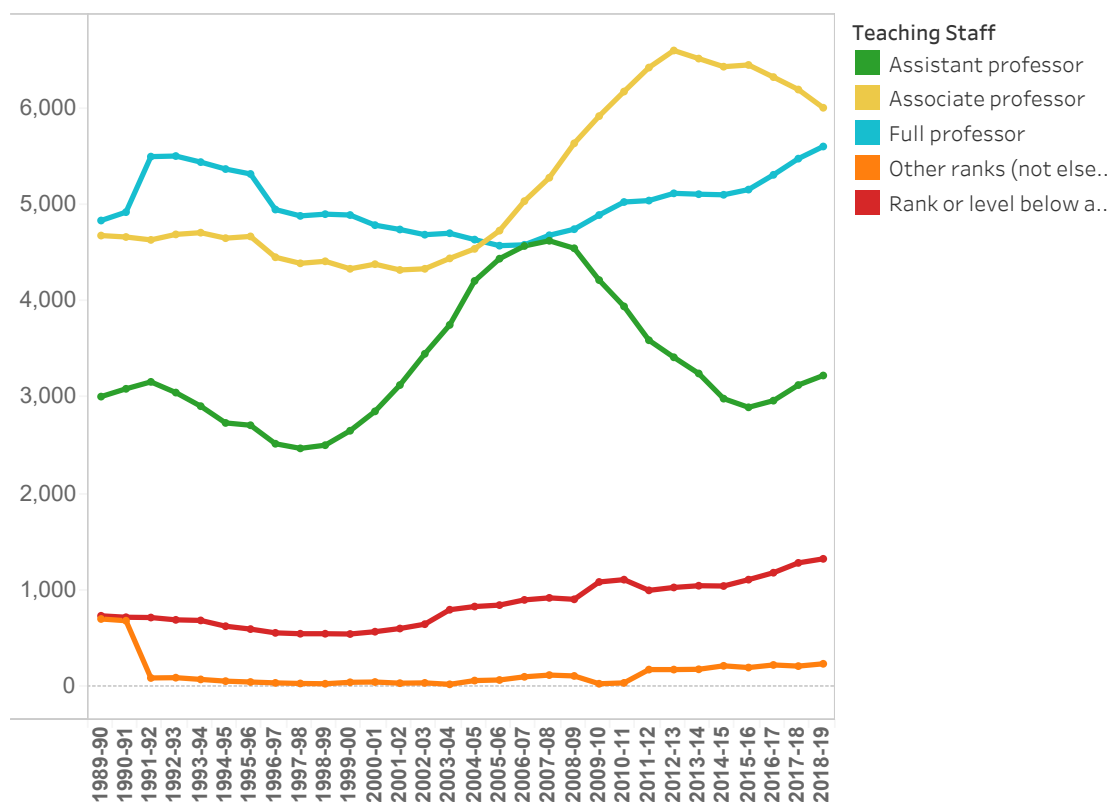
Full-time Teaching Staff in Ontario Colleges



Full-time Academic Staff					
	Counsellors	Full-time instructors	Librarians	Professors	Total
1990-91	261	13	40	8,022	8,336
1991-92	282	9	54	8,163	8,508
1992-93	296	10	43	8,151	8,500
1993-94	285	17	42	7,885	8,229
1994-95	293	28	39	7,789	8,149
1995-96	264	21	37	7,495	7,817
1996-97	242	22	34	6,476	6,774
1997-98	201	18	37	6,243	6,499
1998-99	203	21	32	6,032	6,288
1999-00	203	16	32	6,095	6,346
2000-01	201	14	35	6,027	6,277
2001-02	200	18	38	6,117	6,373
2002-03	199	15	37	6,140	6,391
2003-04	214	15	47	6,300	6,576
2004-05	221	21	48	6,344	6,634
2005-06	220	24	60	6,434	6,738
2006-07	225	25	56	6,534	6,840
2007-08	245	22	60	6,659	6,659
2008-09	248	20	58	6,725	6,725
2009-10	252	25	58	6,764	7,099
2010-11	248	25	56	6,811	7,140
2011-12	246	43	61	6,930	7,280
2012-13	246	47	60	6,977	7,330
2013-14	252	25	58	7,099	7,434
2014-15	248	25	56	7,140	7,469
2015-16	246	43	61	7,280	7,630
2016-17	246	47	60	7,330	7,683

Source: College Employer Council

Full-time Teaching Staff in Ontario Universities



	Full professor	Associate professor	Assistant professor	Rank or level below assistant professor	Other ranks (not elsewhere classified)	Total
1989-90	4,839	4,683	3,012	738	705	13,977
1990-91	4,926	4,668	3,093	723	687	14,100
1991-92	5,502	4,638	3,165	720	93	14,118
1992-93	5,508	4,695	3,054	696	96	14,049
1993-94	5,445	4,713	2,913	690	78	13,839
1994-95	5,373	4,656	2,739	630	60	13,458
1995-96	5,322	4,674	2,715	600	51	13,362
1996-97	4,953	4,458	2,523	561	42	12,540
1997-98	4,887	4,395	2,475	552	36	12,345
1998-99	4,905	4,416	2,508	552	33	12,414
1999-00	4,896	4,338	2,658	549	48	12,489
2000-01	4,791	4,386	2,859	573	51	12,660
2001-02	4,746	4,326	3,132	606	39	12,849
2002-03	4,692	4,338	3,456	651	42	13,182
2003-04	4,707	4,446	3,756	801	27	13,737
2004-05	4,641	4,545	4,212	834	66	14,298
2005-06	4,578	4,734	4,443	849	72	14,676
2006-07	4,587	5,040	4,575	903	105	15,210
2007-08	4,686	5,283	4,629	924	123	15,645
2008-09	4,749	5,640	4,551	909	114	15,963
2009-10	4,896	5,922	4,221	1,089	33	16,151
2010-11	5,031	6,177	3,948	1,113	42	16,301
2011-12	5,031	6,177	3,948	1,113	42	16,301
2012-13	4,896	5,922	4,221	1,089	33	16,151
2013-14	4,896	5,922	4,221	1,089	33	16,151
2014-15	4,896	5,922	4,221	1,089	33	16,151
2015-16	4,896	5,922	4,221	1,089	33	16,151
2016-17	4,896	5,922	4,221	1,089	33	16,151
2017-18	4,896	5,922	4,221	1,089	33	16,151
2018-19	4,896	5,922	4,221	1,089	33	16,151

Source: Statistics Canada, University and College and Academic Staff System. Table 477-0018.

Average College Tuition Fees for Domestic Students

Credential

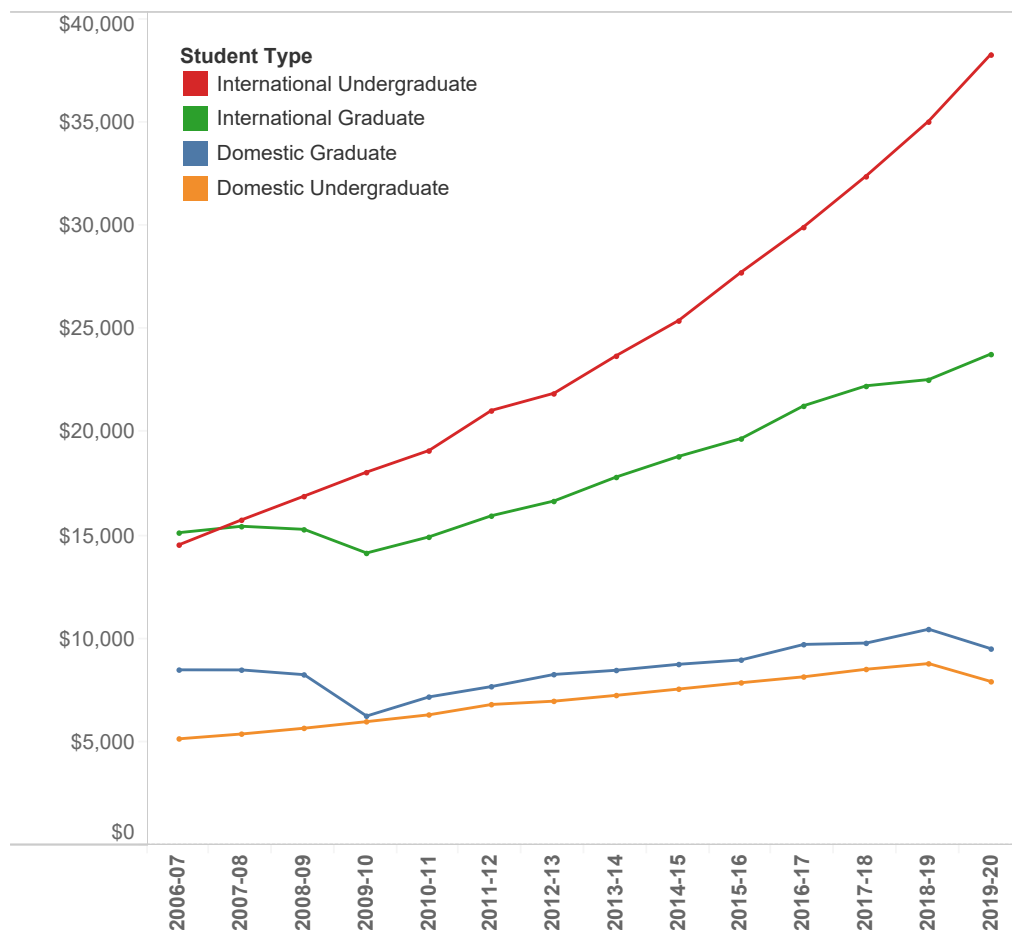
- Advanced diploma
- Applied degree
- Certificate
- Diploma
- Graduate certificate



Credential					
	Certificate	Diploma	Advanced diploma	Graduate certificate	Applied degree
Applied arts	\$2,937	\$3,043	\$3,659	\$4,854	\$7,026
Business	\$2,959	\$2,965	\$2,919	\$4,300	\$6,924
Health	\$3,071	\$3,421	\$5,506	\$4,597	\$6,526
Technology	\$4,340	\$3,049	\$3,023	\$4,963	\$8,191

Source: Ontario Ministry of Training, Colleges and Universities, 2017-18.

Average University Tuition Fees for Domestic and International Students



Student Type				
	Domestic Undergra..	Domestic Gradua..	International Und..	International Gra..
2006-07	\$5,155	\$8,490	\$14,541	\$15,125
2007-08	\$5,388	\$8,486	\$15,745	\$15,433
2008-09	\$5,667	\$8,256	\$16,891	\$15,283
2009-10	\$5,985	\$6,256	\$18,051	\$14,140
2010-11	\$6,316	\$7,181	\$19,098	\$14,920
2011-12	\$6,815	\$7,682	\$21,037	\$15,943
2012-13	\$6,975	\$8,267	\$21,865	\$16,655
2013-14	\$7,257	\$8,470	\$23,688	\$17,818
2014-15	\$7,562	\$8,759	\$25,392	\$18,816
2015-16	\$7,868	\$8,971	\$27,729	\$19,679
2016-17	\$8,154	\$9,719	\$29,921	\$21,263
2017-18	\$8,519	\$9,785	\$32,380	\$22,226
2018-19	\$8,793	\$10,454	\$35,029	\$22,527
2019-20	\$7,922	\$9,507	\$38,276	\$23,770

Source: Statistics Canada. Table 477-0077 - Average Canadian and international tuition fees by level of study. Fees will vary around the average for individual program areas.