





Pathways to Post-Secondary Education

Lakehead University
November 7, 2025
Denise Baxter



What are Indigenous Access Programs?

- Post-secondary education pathways for Indigenous people
- Provide academic skills development (tutoring, academic advising), and culturally informed events and activities
- Include first-year courses
- Transition into any first year of program they qualify for

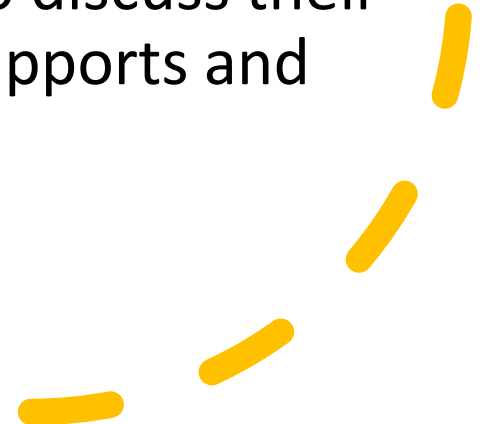


Who is Eligible?

First Nations, Metis, or Inuit who are:

- High school graduates who do not have the U or M level credits to enter directly into their program of interest;
- Mature students who have not completed their OSSD; and
- Applicants self-identify.

Coordinators meet with applicants to discuss their readiness to attend university and supports and services they may need





Our Indigenous Access Programs

Indigenous Transition Year Program (ITYP)

Indigenous Nursing Entry Program (INEP)

Indigenous STEM Access Program (ISTEM)

Benefits

- Great supports! Academic advising, study support, tutoring, and cultural activities
- Programming that honours Indigenous culture
- Small class sizes create a comfortable learning environment
- Earn first year credits

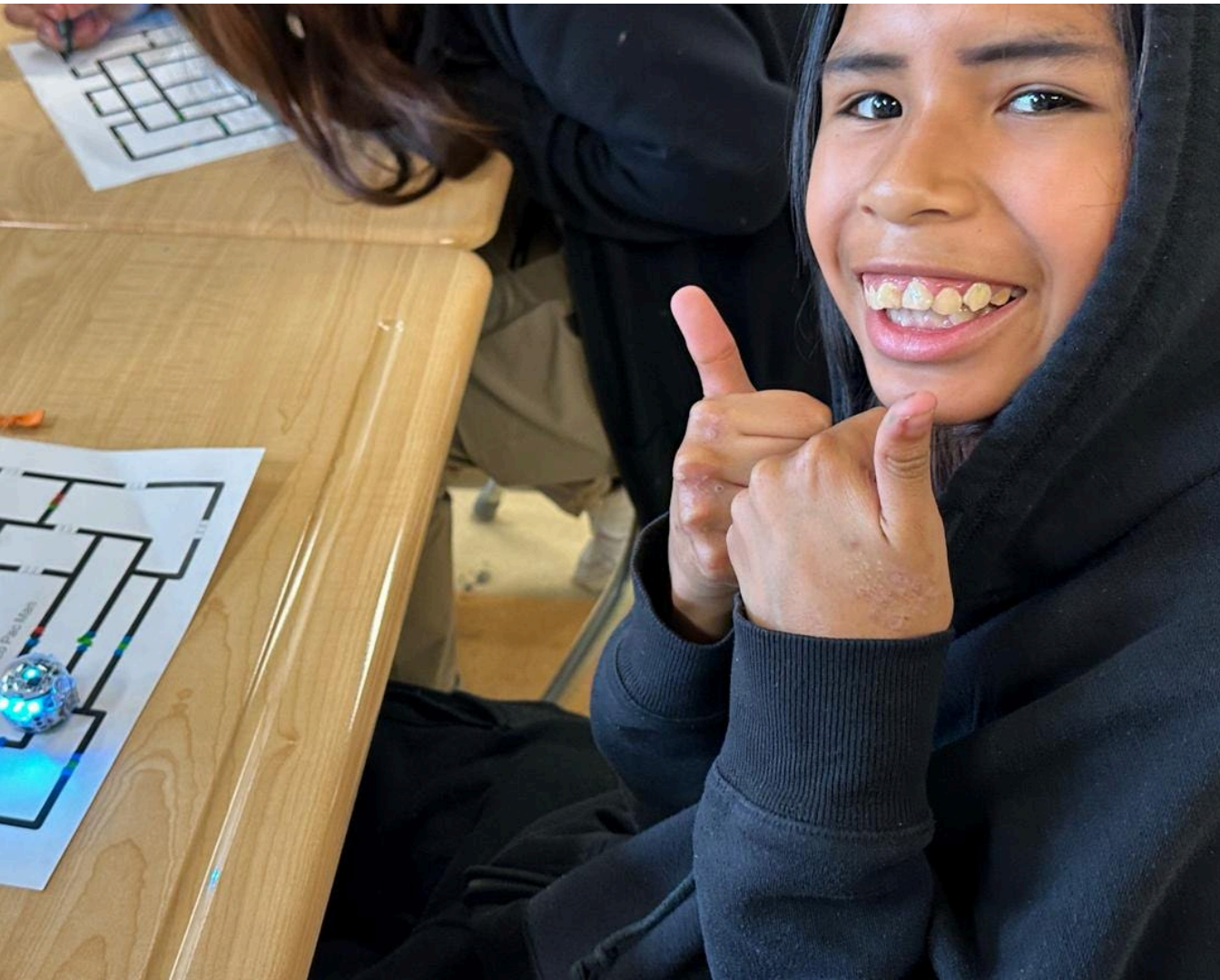




Niijii Indigenous Mentorship Program

- I. Mentorship & Support Services for Indigenous Youth
- II. Outreach & Recruitment

Nijjii Mentorship



In-person tutoring/work on assignments/projects at local high schools & online tutoring open to all Indigenous students. Drop-in sessions or by appointment

Post-secondary information/activities offered in local, regional and remote schools. Hands-on activities specific to students' interests (*ie., nursing, Anthropology, Engineering, etc.*).

Personalized meetings with university faculty/staff to answer specific questions about their programs ~ available online & in-person

Games and social connection sessions... Kahoot trivia or similar games and conversations.

Nijjii Project Fair (held in conjunction with Indigenous Preview Day)

Nijjii Summer Employment Experience Program

Transition & support

Niiiji Outreach & Recruitment



Lunch & Learns in local & regional schools to provide post-secondary discussions over lunch

- Access Programs
- Lakehead's Academic Programs
- Post-Secondary Applications
- Assist in Applying for Post-Secondary Funding

Attend First Nation Career Fairs

Travel with Aboriginal Post-Secondary Information Tour (APSIP)

Program for Recruitment throughout the Fall

Indigenous Preview Day to Showcase our Academic Faculties and Programs ~ every April

Campus tours and guest speaker events throughout the year

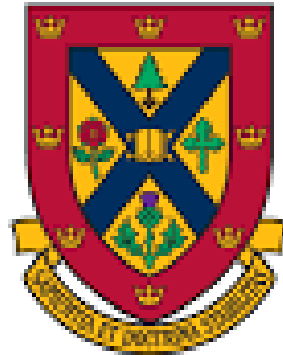
The background of the image is a blurred, close-up shot of green grass or reeds, creating a textured, organic feel. The colors range from light green to dark olive green.

INDIGENOUS TEACHER EDUCATION PROGRAM PARTNERSHIP



Lambton Kent District School Board

Student Achievement ✓ *Community Success*



Queen's
UNIVERSITY



Lambton Kent District School Board

Student Achievement ✓ *Community Success*

- 22 000 students
 - 3400 staff
- 50 elementary schools
- 12 secondary schools
- Serving Sarnia, Chatham and surrounding areas in Southwestern Ontario



- Four First Nations partners
- Variety of entry points into LKDSB:
 - JK
 - Grade 1
 - Grade 4
 - Grade 9
 - Adult & Continuing Education



EQUITY AUDIT: 2023

**ACTION PLAN & OPERATIONAL
GOALS**

INCREASING REPRESENTATION

INDIGENOUS TEACHER EDUCATION PROGRAM: PARTNERSHIP BETWEEN QUEEN'S UNIVERSITY AND LKDSB

- Community-based: Akwesasne, Manitoulin-North Shore, Mushkegowuk Territory, Pikangikum, Tyendinaga, or Lambton Kent
- Face to face courses are delivered over 4 weekends per term for 6 terms, plus July in the first summer term at Queen's University, Faculty of Education.
- Primary-Junior (PJ) division (JK-Grade 6).
- Can be admitted to the program with grade 12 or equivalent if you are of Indigenous ancestry. Can also be admitted with an undergraduate degree.

INDIGENOUS TEACHER EDUCATION PROGRAM: PARTNERSHIP BETWEEN QUEEN'S UNIVERSITY AND LKDSB

- All candidates will receive a **Bachelor of Education for the Primary-Junior Division**.
- Experientially-based, with 18-weeks of practice teaching in LKDSB or First Nations schools.
- Provides the opportunity for eligible candidates who are already teaching in a school setting to qualify for the Ontario College of Teachers (OCT) Multi-Session Transitional Certificate of Qualification and Registration (MTCQR) and then, with Faculty of Education approval, to complete practicum requirements while continuing to work in their classroom teaching positions

INDIGENOUS TEACHER EDUCATION PROGRAM: PARTNERSHIP BETWEEN QUEEN'S UNIVERSITY AND LKDSB

- LKDSB's priority is to provide a mechanism for First Nations people in the LKDSB area to gain their B. Ed. and increase representation
- Many graduates return to their home communities to work in First Nations schools and related departments
- Other graduates achieve their degree and continue to pursue post-graduate pathways (law, MBA, etc)
- We are thrilled when graduates look to the LKDSB for employment opportunities: classroom teachers, language teachers, Indigenous Lead and graduation coaches